

## Product datasheet for **PM1006A**

### MCP1 (CCL2) Mouse Monoclonal Antibody

#### Product data:

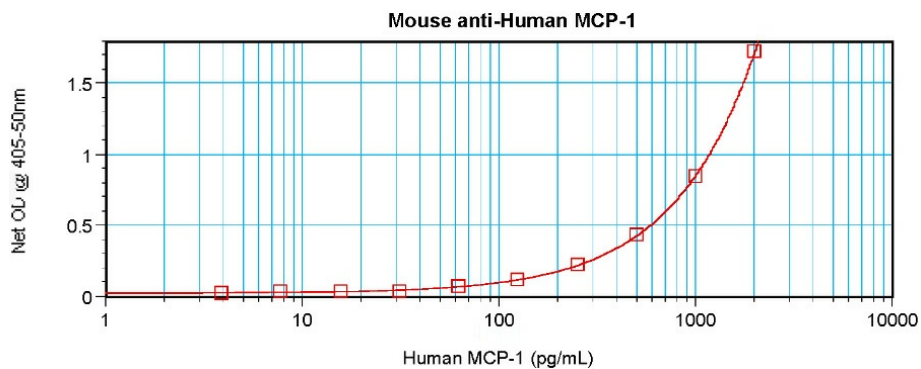
Product Type:	Primary Antibodies
Applications:	ELISA, IF, IHC, WB
Recommended Dilution:	<b>Sandwich ELISA:</b> In a Sandwich ELISA (assuming 100 µl/well), a concentration of 2-4 µg/ml of this antibody will detect at least 300 pg/ml of recombinant Human MCP1 when used with Biotinylated affinity purified anti-Human MCP1 antibody ( <i>Cat.-No</i> PP1044B1 or PP1044B2). <b>Western Blot:</b> To detect Human MCP1 by Western Blot analysis this antibody can be used at a concentration of 0.20-0.40 µg/ml. Used in conjunction with compatible secondary reagents the detection limit for recombinant Human MCP1 is 1.0-2.0 ng/lane, under reducing or non-reducing conditions. <b>Immunohistochemistry:</b> 10 µg/ml with an Overnight Incubation at 4°C. This MCP1 antibody stained Formalin-Fixed, Paraffin-Embedded Sections of Human breast invasive ductal carcinoma. An HRP-labeled polymer detection system was used with a DAB Chromogen. Heat induced antigen retrieval with a pH 6.0 Sodium Citrate buffer is recommended. <b>Immunofluorescence:</b> This antibody ( <b>Lot #0105M031</b> ) stained PBMC. The primary antibody was incubated at 10.0 mg/ml for one hour at room temperature followed by a fluorescent labeled secondary antibody. See photos 1 and 2. Optimal concentrations and conditions may vary. <i>Protocol and staining provided by Dr. Lauren Binge, Laboratory of Prof. Charles Mackay, Monash Univeristy, Australia.</i>
Reactivity:	Human
Host:	Mouse
Isotype:	IgG1
Clonality:	Monoclonal
Immunogen:	Highly pure (> 98%) E.Coli derived Recombinant Human MCP-1/MCAF ( <i>Cat.-No</i> PA098)
Specificity:	The antibody recognizes Human MCP-1/MCAF. Other species not tested.
Formulation:	PBS without preservatives State: Azide Free State: Lyophilized (sterile filtered) purified Ig fraction
Reconstitution Method:	Restore with sterile water to a concentration of 1.0 mg/ml.
Purification:	Affinity Chromatography on Protein A



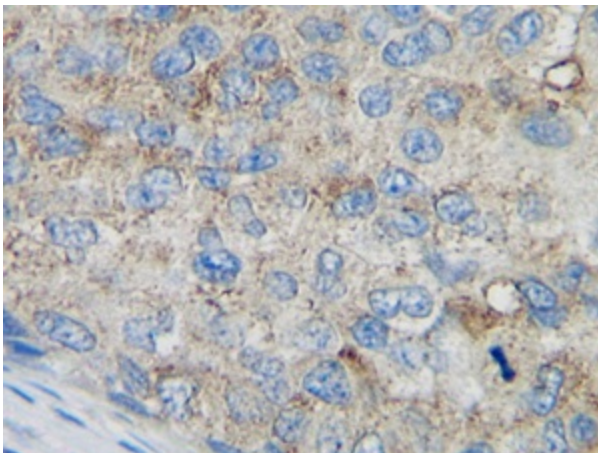
[View online »](#)

Conjugation:	Unconjugated
Storage:	Prior to reconstitution store at 2-8°C. Following reconstitution store undiluted at 2-8°C for one month or (in aliquots) at -20°C for longer. Avoid repeated freezing and thawing.
Stability:	Shelf life: one year from despatch.
Gene Name:	C-C motif chemokine ligand 2
Database Link:	<a href="#">Entrez Gene 6347 Human P13500</a>
Background:	This chemotactic factor attracts monocytes and basophils but not neutrophils or eosinophils and augments monocyte anti-tumor activity. It has been implicated in the pathogenesis of diseases characterized by monocytic infiltrates, like psoriasis, rheumatoid arthritis or atherosclerosis. It may be involved in the recruitment of monocytes into the arterial wall during the disease process of atherosclerosis.
Synonyms:	C-C motif chemokine 2, SCYA2, MCAF, Small-inducible cytokine A2, MCP-1, HC11, HC-11

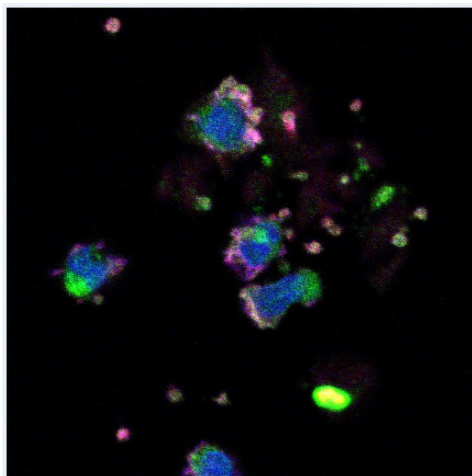
### Product images:



Sandwich ELISA using PM1006A



Immunohistochemistry: This antibody stained formalin-fixed, paraffin-embedded sections of human breast invasive ductal carcinoma. Tissue samples were provided by the Cooperative Human Tissue Network, which is funded by the National Cancer Institute.



This antibody stained PBMC: The primary antibody was incubated at 10.0 ug/ml for one hour at room temperature followed by a fluorescent labeled secondary antibody. Protocol and staining provided by Dr. Lauren Binge, Laboratory of Prof. Charles Mackay, Monash University, Australia.