

Product datasheet for **PM1000A**

IL2 Mouse Monoclonal Antibody [Clone ID: 1H10-1-1]

Product data:

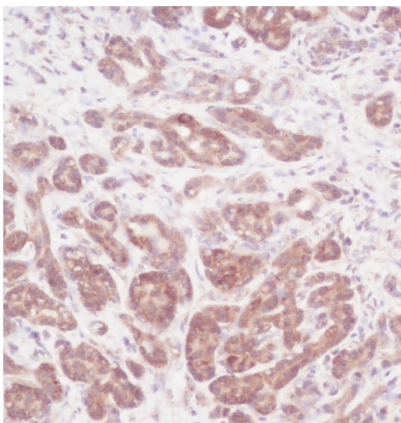
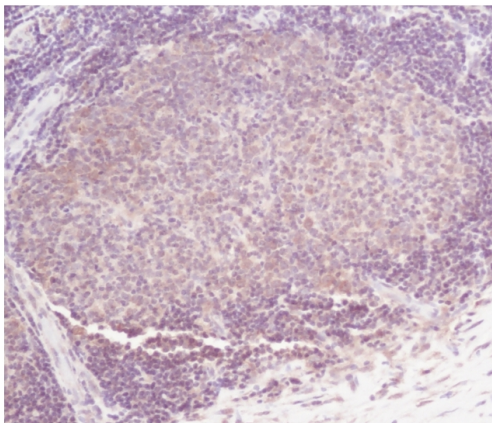
Product Type:	Primary Antibodies
Clone Name:	1H10-1-1
Applications:	ELISA, IHC, WB
Recommended Dilution:	Sandwich ELISA: In a Sandwich ELISA (assuming 100 µl/well), a concentration of 4.0-8.0 µg/ml of this antibody will detect at least 1000 pg/ml of recombinant Human IL-2 when used with Biotin conjugated anti-Human IL-2 (<i>Cat.-No</i> PP1024B) as the detection antibody at a concentration of approximately 1.0-2.0 µg/ml. Western Blot: To detect human IL-2 by Western blot analysis this antibody can be used at a concentration of 1.0-2.0 µg/ml. Used in conjunction with compatible secondary reagents the detection limit for recombinant human IL-2 is 2.0-4.0 ng/lane, under reducing or non-reducing conditions. Immunohistochemistry on Paraffin Sections: 2.5-5.0 µg/ml with an overnight incubation at 4°C. An HRP-labeled polymer detection system was used with a DAB chromogen. Heat induced antigen retrieval with a pH 6.0 Sodium citrate buffer is recommended. Positive Control: Human Breast invasive ductal carcinoma.
Reactivity:	Human
Host:	Mouse
Isotype:	IgG1
Clonality:	Monoclonal
Immunogen:	Highly purified (>98%) E.coli derived recombinant Human IL-2 (<i>Cat.-No</i> PA075)
Specificity:	Detects Human Interleukin 2. Other species not tested.
Formulation:	PBS without preservatives State: Azide Free State: Lyophilized (Sterile filtered) purified Ig fraction
Reconstitution Method:	Restore in sterile water to a concentration of 1.0 mg/ml.
Purification:	Affinity Chromatography on Protein A
Conjugation:	Unconjugated



[View online »](#)

Storage:	Prior to reconstitution store at 2-8°C. Following reconstitution the antibody can be stored at 2-8°C for two weeks or (in aliquots) at -20°C for at least 6 months. Avoid repeated freezing and thawing.
Stability:	Shelf life: One year from despatch.
Gene Name:	interleukin 2
Database Link:	Entrez Gene 3558 Human P60568
Background:	Interleukin 2 (IL2) is a secreted cytokine that is important for the proliferation of T and B lymphocytes. The receptor of this cytokine is a heterotrimeric protein complex whose gamma chain is also shared by interleukin 4 (IL4) and interleukin 7 (IL7). The expression of this gene in mature thymocytes is monoallelic, which represents an unusual regulatory mode for controlling the precise expression of a single gene. The targeted disruption of a similar gene in mice leads to ulcerative colitis like disease, which suggests an essential role of this gene in the immune response to antigenic stimuli. IL2 has been shown to have antitumor effects in some studies. This is probably mediated by cytotoxic effector cells.
Synonyms:	IL-2, TCGF

Product images:



Immunohistochemistry: This antibody stained formalin-fixed, paraffin-embedded sections of human breast invasive ductal carcinoma. The recommended concentration is 2.5-5.0 ug/ml with an overnight incubation at 4°C. An HRP-labeled polymer detection system was used with a DAB chromogen. Heat induced antigen retrieval with a pH 6.0 sodium citrate buffer is recommended. Optimal concentrations and conditions may vary. Tissue samples were provided by the Cooperative Human Tissue Network, which is funded by the National Cancer Institute.