

## Product datasheet for PH327926

### MTFR1 (NM\_001145838) Human Mass Spec Standard

#### Product data:

Product Type:	Mass Spec Standards
Description:	MTFR1 MS Standard C13 and N15-labeled recombinant protein (NP_001139310)
Species:	Human
Expression Host:	HEK293
Expression cDNA Clone or AA Sequence:	RC227926
Predicted MW:	33 kDa
Protein Sequence:	>RC227926 representing NM_001145838 Red=Cloning site Green=Tags(s)  MLGWIKRLIRMVFQQVGVSMQSIINSHATEWSPSHPGEDAVASFADVGWVAKKEEGEC SARLRTEVRSRPPL QDDLFFFEKAPSRQISLPDLSQEEPQLKTPALANEEALQKICALENELAALRAQIAKIVTQQEQQLTAG DLDDSTTFGTIPHPPPPPPLPPPALGLHQSTSAYDLIKERREKRANAGKTLVKNNPKKPEMPNMLEILK EMNSVKLRSVKRSEQDVKPKPVDATDPAALIAEALKKKFAYRYSQDEVEKGPKSESEATSERVLF PHMLKPTGKMKAL IENVSDS  TRTRPLEQKLI SEEDLAANDILDYKDDDDKV
Tag:	C-Myc/DDK
Purity:	> 80% as determined by SDS-PAGE and Coomassie blue staining
Concentration:	>0.05 µg/µL as determined by microplate BCA method
Labeling Method:	Labeled with [U- <sup>13</sup> C <sub>6</sub> , <sup>15</sup> N <sub>4</sub> ]-L-Arginine and [U- <sup>13</sup> C <sub>6</sub> , <sup>15</sup> N <sub>2</sub> ]-L-Lysine
Buffer:	25 mM Tris-HCl, 100 mM glycine, pH 7.3
Storage:	Store at -80°C. Avoid repeated freeze-thaw cycles.
Stability:	Stable for 3 months from receipt of products under proper storage and handling conditions.
RefSeq:	<a href="#">NP_001139310</a>
RefSeq ORF:	900
Synonyms:	CHPPR; FAM54A2
Locus ID:	9650
UniProt ID:	<a href="#">Q15390</a>

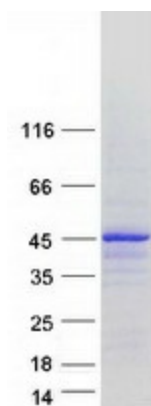


[View online »](#)

Cytogenetics: 8q13.1

**Summary:** This gene encodes a mitochondrial protein that is characterized by a poly-proline rich region. A chicken homolog of this protein promotes mitochondrial fission and the mouse homolog protects cells from oxidative stress. A related pseudogene of this gene is found on chromosome X. [provided by RefSeq, Mar 2009]

**Product images:**



Coomassie blue staining of purified MTFR1 protein (Cat# [TP327926]). The protein was produced from HEK293T cells transfected with MTFR1 cDNA clone (Cat# [RC227926]) using MegaTran 2.0 (Cat# [TT210002]).