

## Product datasheet for PH327915

### GKAP1 (NM\_001135953) Human Mass Spec Standard

#### Product data:

Product Type:	Mass Spec Standards
Description:	GKAP1 MS Standard C13 and N15-labeled recombinant protein (NP_001129425)
Species:	Human
Expression Host:	HEK293
Expression cDNA Clone or AA Sequence:	RC227915
Predicted MW:	35.9 kDa
Protein Sequence:	>RC227915 representing NM_001135953 <span style="color: red;">Red</span> =Cloning site <span style="color: green;">Green</span> =Tags(s)  MASAVLSSVPTTASRFALLQVDSGSGSDSEPGKKGKGRNTGKSQTLGSKSTTNEKKREKRRKKKEQQQSEA NELRNLAFFKKIPQKSSHAVCNAQHDLPLSNPVQKDSREENWQEWQRDEQLTSEMFEADLEKALLSKLE YEEHKKEYEDAENTSTQSKVMNKKDKRKNHQGKDRPLTVSLKDFHSEDHISKKTEEVVLKDGRIERLKLE LERKDAEIQKLNKVNITQWEAKYKEVKARNAQLLKMLQEGEMKDKAEILLQVDESQSIKNELTIQVTSLHA ALEQERSKVKVLQAEAKYQGGRRGKRNSESDQCR  <span style="color: red;">TR</span> <span style="color: green;">TRPLEQKLISEEDLAANDILDYKDDDDKV</span>
Tag:	C-Myc/DDK
Purity:	> 80% as determined by SDS-PAGE and Coomassie blue staining
Concentration:	>0.05 µg/µL as determined by microplate BCA method
Labeling Method:	Labeled with [U- <sup>13</sup> C <sub>6</sub> , <sup>15</sup> N <sub>4</sub> ]-L-Arginine and [U- <sup>13</sup> C <sub>6</sub> , <sup>15</sup> N <sub>2</sub> ]-L-Lysine
Buffer:	25 mM Tris-HCl, 100 mM glycine, pH 7.3
Storage:	Store at -80°C. Avoid repeated freeze-thaw cycles.
Stability:	Stable for 3 months from receipt of products under proper storage and handling conditions.
RefSeq:	<a href="#">NP_001129425</a>
RefSeq ORF:	945
Synonyms:	FKSG21; GKAP42
Locus ID:	80318
UniProt ID:	<a href="#">Q5VSY0</a>



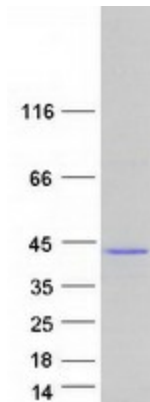
[View online »](#)

Cytogenetics: 9q21.32

**Summary:** This gene encodes a protein that is highly similar to the mouse cGMP-dependent protein kinase anchoring protein 42kDa. The mouse protein has been found to localize with the Golgi and recruit cGMP-dependent protein kinase I alpha to the Golgi in mouse testes. It is thought to play a role in germ cell development. Transcript variants encoding different isoforms have been found for this gene. [provided by RefSeq, Oct 2008]

**Protein Families:** Druggable Genome

### Product images:



Coomassie blue staining of purified GKAP1 protein (Cat# [TP327915]). The protein was produced from HEK293T cells transfected with GKAP1 cDNA clone (Cat# [RC227915]) using MegaTran 2.0 (Cat# [TT210002]).