

Product datasheet for PH327881

SH2B1 (NM_001145795) Human Mass Spec Standard

Product data:

Product Type:	Mass Spec Standards
Description:	SH2B1 MS Standard C13 and N15-labeled recombinant protein (NP_001139267)
Species:	Human
Expression Host:	HEK293
Expression cDNA Clone or AA Sequence:	RC227881
Predicted MW:	79.2 kDa
Protein Sequence:	>RC227881 representing NM_001145795 Red=Cloning site Green=Tags(s)

MNGAPSPEDGASPPSPPLPPPPPSWREFCESHARAAALDFARRFRLYLASHPQYAGPGAEEAASFRRFAE
LFLQHFEAEVARASGSLSPPI LAPSPGAEISPHDLSLESCRVGGLAVLGPSSRSEDLAGPLPSSVSSS
STTSSKPKLKKRFSLRVGRSVRGSVRGILQWRGTVDPPSSAGPLETSSGPPVLGNSNSNSSGGAGTVG
RGLVSDGTSPGERWTHRFERLRLSRGGALKDGAGMVQREELL SFGMAEEAAPDPAGVGRGGVAGPPSG
GGGQPQWQKCRLLLRSEGE GGGSRLEFFVPPKASRPRLSIPCSSITDVRTTTALEMPDRENTFVVKVEG
PSEYIMETVDAQHVKAWSDIQECLSPGPCPATSPRPMTLPLAPGTSFLTRENTDSELSCLNHSESLPS
QDLLLLGPSESNDRLSQGAYGGLSDRPSASISPPSSASIAASHFDSMELLPELPPRIPIIEGPPTGTVHPL
SAPYPLDTPETATGSFLFQGEPEGGEDQPLSGYPWFHGML SRLKAAQLVLTGGTGS HVFLVRQSETR
RGEYVLT FNFQGKAKHLRLSLNEEGQCRVQHLWFQSI FDMLEHFRVHPIPLESGGSSDVLVSYVPSSQR
QQEPTTSHDPPQPPEPPSWTDPQP GAEEASRAPEVAAAAAAAAAKERQEKEKAGGGGVPEELVPVVELVP
VVELEEA IAPGSEAQAGSGGDAGVPPMVQLQQSPLGGDGEEGGHPRAINNQYSFV

TRTRPLEQKLISEEDLAANDILDYKDDDDKV

Tag:	C-Myc/DDK
Purity:	> 80% as determined by SDS-PAGE and Coomassie blue staining
Concentration:	>0.05 µg/µL as determined by microplate BCA method
Labeling Method:	Labeled with [U- ¹³ C ₆ , ¹⁵ N ₄]-L-Arginine and [U- ¹³ C ₆ , ¹⁵ N ₂]-L-Lysine
Buffer:	25 mM Tris-HCl, 100 mM glycine, pH 7.3
Storage:	Store at -80°C. Avoid repeated freeze-thaw cycles.
Stability:	Stable for 3 months from receipt of products under proper storage and handling conditions.
RefSeq:	NP_001139267



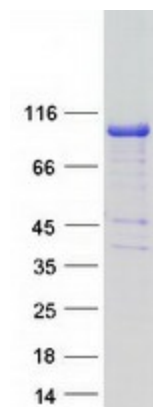
[View online »](#)

RefSeq ORF: 2268
Synonyms: PSM; SH2B
Locus ID: 25970
UniProt ID: [Q9NRF2](#), [A0A024QZD2](#), [B4DLN5](#), [B3KNV5](#)
Cytogenetics: 16p11.2

Summary: This gene encodes a member of the SH2-domain containing mediators family. The encoded protein mediates activation of various kinases and may function in cytokine and growth factor receptor signaling and cellular transformation. Alternatively spliced transcript variants have been described. [provided by RefSeq, Mar 2009]

Protein Pathways: Neurotrophin signaling pathway

Product images:



Coomassie blue staining of purified SH2B1 protein (Cat# [TP327881]). The protein was produced from HEK293T cells transfected with SH2B1 cDNA clone (Cat# [RC227881]) using MegaTran 2.0 (Cat# [TT210002]).