

## Product datasheet for PH327878

### MX1 (NM\_001144925) Human Mass Spec Standard

#### Product data:

Product Type:	Mass Spec Standards
Description:	MX1 MS Standard C13 and N15-labeled recombinant protein (NP_001138397)
Species:	Human
Expression Host:	HEK293
Expression cDNA Clone or AA Sequence:	RC227878
Predicted MW:	75.3 kDa
Protein Sequence:	>RC227878 representing NM_001144925 Red=Cloning site Green=Tags(s)

MVVSEVDIAKADPAAASHPLLLNGDATVAQKNPGSVAENNLCSQYEEKVRPCIDLIDSLRALGVEQDLAL  
PAIAVIGDQSSGKSSVLEALSGVALPRGSGIVTRCPLVLKLLKLVNEDKWRGKVSQDYIEIEISDASEVE  
KEINKAQNAIAGEGMGISHELITLIESSRDVPLTLIDLPGITRVAVGNQPADIGYKIKTLIKKYIQRQE  
TISLVVPSNVDIATTEAL SMAQEVDPEGDRTIGILTKPDLVDKGTEDKVVDVVRNLVFHLKKGMYIVKC  
RGQEQEIQDQLSLSEALQREKIFFENHPYFRDLLEEGKATVPCLAEKL TSELITHICKSLPLENQIKETH  
QRITEELQKYGVDIPEDENEKMFFLIDKINAFNQDITALMQGEETVGEEDIRLFLRLRHEFHKWKSTIEN  
NFQEGHKILSRKIQKFENQYRGRELPGFVNYRTFETIVKQKIKALEEPAVDMLHTVTDMVRLAFTDVSIK  
NFEFFFNLRHTAKSKIEDIRAEQEREKELIRLHFQMEQIVYQCQDQVYRGALQKVREKELEEEKKKSWD  
FGAFQSSSATDSSMEEIFQHLMAYHQEASKRISSHIPLIIQFFMLQTYGQQLQKAMLQLLQDKDQTYSWLL  
KERSDTSDKRFLKERLARLTQARRRLAQFPG

TRTRPLEQKLI SEEDLAANDILDYKDDDDKV

Tag:	C-Myc/DDK
Purity:	> 80% as determined by SDS-PAGE and Coomassie blue staining
Concentration:	>0.05 µg/µL as determined by microplate BCA method
Labeling Method:	Labeled with [U- 13C6, 15N4]-L-Arginine and [U- 13C6, 15N2]-L-Lysine
Buffer:	25 mM Tris-HCl, 100 mM glycine, pH 7.3
Storage:	Store at -80°C. Avoid repeated freeze-thaw cycles.
Stability:	Stable for 3 months from receipt of products under proper storage and handling conditions.
RefSeq:	<a href="#">NP_001138397</a>
RefSeq ORF:	1986



[View online »](#)

**Synonyms:** IFI-78K; IFI78; IncMX1-215; MX; MxA

**Locus ID:** 4599

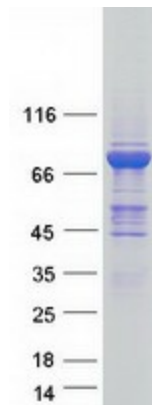
**UniProt ID:** [P20591](#)

**Cytogenetics:** 21q22.3

**Summary:** This gene encodes a guanosine triphosphate (GTP)-metabolizing protein that participates in the cellular antiviral response. The encoded protein is induced by type I and type II interferons and antagonizes the replication process of several different RNA and DNA viruses. There is a related gene located adjacent to this gene on chromosome 21, and there are multiple pseudogenes located in a cluster on chromosome 4. Alternative splicing results in multiple transcript variants. [provided by RefSeq, Sep 2013]

**Protein Families:** Druggable Genome

### Product images:



Coomassie blue staining of purified MX1 protein (Cat# [TP327878]). The protein was produced from HEK293T cells transfected with MX1 cDNA clone (Cat# [RC227878]) using MegaTran 2.0 (Cat# [TT210002]).