

## Product datasheet for PH327856

### beta COP (COPB1) (NM\_001144061) Human Mass Spec Standard

#### Product data:

Product Type:	Mass Spec Standards
Description:	COPB1 MS Standard C13 and N15-labeled recombinant protein (NP_001137533)
Species:	Human
Expression Host:	HEK293
Expression cDNA Clone or AA Sequence:	RC227856
Predicted MW:	107.1 kDa
Protein Sequence:	>RC227856 protein sequence Red=Cloning site Green=Tags(s)

MTAAENVCYTLINVPMDSEPPSEISLKNLDEKGDVKSKEALKKVIIMILNGEKLPGLLMTIIRFVLPLO  
DHTIKKLLLVFWEIVPKTTPDGRLLEHMLVCDAYRKDLQHPNEFIRGSTLRFLCKLKEALLEPLMPAI  
RACLEHRHSYVRRNAVLAITYIYRNFEHLIPDAPELIHDFLVNEKDASCKRNAFMMLIHADQDRALDYLS  
TCIDQVQTFGDILQLVIVELIYKVCHANPSEARARFIRCIYNLLQSSSPAVKYEAAGTLVTLSSAPTAIKA  
AAQCYIDLIIKESDNNVCLIVLDRLIELKEHPAHERVLQDLVMDILRVLSTPDLEVRKKTQLALDLVSS  
RNVEELVIVLKKEVIKTNVSEHEDTDKYRQLLVRTLHSCSVRFPDMAANVIVLMEFLSDNNEAAAADV  
LEFVREAIQRFDNLRMLIVEKMLEVFHAIKSVKIYRGALWILGEYCSTKEDIQSVMTIIRRSLGEIPIVE  
SEIKKEAGELKPEEEITVGPVQKLVTEMGTYATQSALSSSRPTKKEEDRPPLRGFLLDGDFVFAASLATT  
LTKIALRYVALVQEKKQNSFVAEAMLLMATILHLGKSSLPKPIITDDVDRIISLCLKVLECSPLMNDI  
FNKECRQSLSHMLSAKLEEEKLSQKKESEKRNVTVPDDPISFMQLTAKNEMNCKEDQFQLSLLAAMGNT  
QRKEAADPLASKLNKVTQLTGFSDPVYAEAYVHVNYDVLVDLVDLVNQTSDTLQNLCTLELATLGLKLV  
KPSPLTLAPHDFANIKANVKVASTENGIIFGNIVYDVSGAASDRNCVVLSDIHIDIMDYIQPATCTDAEF  
RQMWAEFEWENKVTVNTNMVDLNDYLQHILKSTNMKCLTPEKALSGYCGFMAANLYARSIFGEDALANVS  
IEKPIHQGPDAAVTGHIRIRAKSQGMALSLGDKINLSQKKTISI

TRTRPLEQKLI SEEDLAANDILDYKDDDDKV

Tag:	C-Myc/DDK
Purity:	> 80% as determined by SDS-PAGE and Coomassie blue staining
Concentration:	>0.05 µg/µL as determined by microplate BCA method
Labeling Method:	Labeled with [U- <sup>13</sup> C <sub>6</sub> , <sup>15</sup> N <sub>4</sub> ]-L-Arginine and [U- <sup>13</sup> C <sub>6</sub> , <sup>15</sup> N <sub>2</sub> ]-L-Lysine
Buffer:	25 mM Tris-HCl, 100 mM glycine, pH 7.3
Storage:	Store at -80°C. Avoid repeated freeze-thaw cycles.
Stability:	Stable for 3 months from receipt of products under proper storage and handling conditions.



[View online »](#)

RefSeq: [NP\\_001137533](#)

RefSeq Size: 3429

RefSeq ORF: 2859

Synonyms: BARMACS; COPB

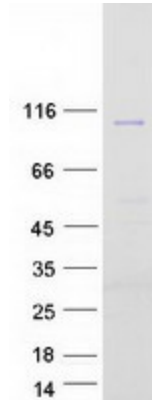
Locus ID: 1315

UniProt ID: [P53618](#)

Cytogenetics: 11p15.2

**Summary:** This gene encodes a protein subunit of the coatomer complex associated with non-clathrin coated vesicles. The coatomer complex, also known as the coat protein complex 1, forms in the cytoplasm and is recruited to the Golgi by activated guanosine triphosphatases. Once at the Golgi membrane, the coatomer complex may assist in the movement of protein and lipid components back to the endoplasmic reticulum. Alternatively spliced transcript variants have been described. [provided by RefSeq, Jan 2009]

### Product images:



Coomassie blue staining of purified COPB1 protein (Cat# [TP327856]). The protein was produced from HEK293T cells transfected with COPB1 cDNA clone (Cat# [RC227856]) using MegaTran 2.0 (Cat# [TT210002]).