

Product datasheet for PH327811

DACH2 (NM_001139515) Human Mass Spec Standard

Product data:

Product Type:	Mass Spec Standards
Description:	DACH2 MS Standard C13 and N15-labeled recombinant protein (NP_001132987)
Species:	Human
Expression Host:	HEK293
Expression cDNA Clone or AA Sequence:	RC227811
Predicted MW:	47 kDa
Protein Sequence:	>RC227811 representing NM_001139515 Red=Cloning site Green=Tags(s) MTRKQAVNSSRPGRPPKRS LGVLQENARLLTHAVPGLLSPGLITPTGITAAAMAEAMKLQKMKLMAMNTL QGNQSQNGTESEPD DLNSNTGGSESSWDKDKMQSPFAAPGPQHGI AHAALAGQPGIGGAPTLNPLQQNHL LTNRLDLPFMMMPHLLPVSLPPASVAMAMNQMNLNTIANMAAAQIHSPLSRAGTSVIKERIPESPS APSL EENHRPGSQTSSTSSSVSSPSQMDHHLERMEEVPVQIPIMKSPLDKIQ LTPGQALPAGFPGPF I FADSLSSVETLLTNIQGLLKVALDNARIQEKQIQEKKELRLELYREREIRENLERQLAVELQSRTTMQK RLKKEKTKRKLQEAL EFESKRREQVEQALQATTSDSGLRMLKDTGIPDIEIENNGTPHDSAAMQGGNY YCLEMAQQLYSA TRTRPLEQKLI SEEDLAANDILDYKDDDDKV
Tag:	C-Myc/DDK
Purity:	> 80% as determined by SDS-PAGE and Coomassie blue staining
Concentration:	>0.05 µg/µL as determined by microplate BCA method
Labeling Method:	Labeled with [U- 13C6, 15N4]-L-Arginine and [U- 13C6, 15N2]-L-Lysine
Buffer:	25 mM Tris-HCl, 100 mM glycine, pH 7.3
Storage:	Store at -80°C. Avoid repeated freeze-thaw cycles.
Stability:	Stable for 3 months from receipt of products under proper storage and handling conditions.
RefSeq:	<u>NP_001132987</u>
RefSeq ORF:	1296
Locus ID:	117154
UniProt ID:	<u>Q96NX9, A8K311</u>



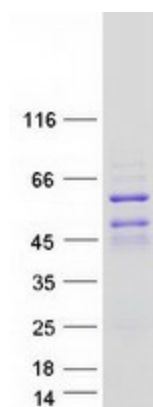
[View online »](#)

Cytogenetics: Xq21.2

Summary: This gene is one of two genes which encode a protein similar to the Drosophila protein dachshund, a transcription factor involved in cell fate determination in the eye, limb and genital disc of the fly. The encoded protein contains two characteristic dachshund domains: an N-terminal domain responsible for DNA binding and a C-terminal domain responsible for protein-protein interactions. This gene is located on the X chromosome and is subject to inactivation by DNA methylation. The encoded protein may be involved in regulation of organogenesis and myogenesis, and may play a role in premature ovarian failure. Multiple transcript variants encoding different isoforms have been found for this gene. [provided by RefSeq, Nov 2008]

Protein Families: Transcription Factors

Product images:



Coomassie blue staining of purified DACH2 protein (Cat# [TP327811]). The protein was produced from HEK293T cells transfected with DACH2 cDNA clone (Cat# [RC227811]) using MegaTran 2.0 (Cat# [TT210002]).