

## Product datasheet for PH327716

### LANCL1 (NM\_001136574) Human Mass Spec Standard

#### Product data:

Product Type:	Mass Spec Standards
Description:	LANCL1 MS Standard C13 and N15-labeled recombinant protein (NP_001130046)
Species:	Human
Expression Host:	HEK293
Expression cDNA Clone or AA Sequence:	RC227716
Predicted MW:	45.3 kDa
Protein Sequence:	>RC227716 protein sequence Red=Cloning site Green=Tags(s)
	<p>MAQRAFNPYADYNKSLAEGYFDAAGRLTPEFSQRLTNKIRELLQQMERGLKSADPRDGTGYTGWAGIAV LYLHLYDVFGLPAYLQLAHGYVKQLNCLTKRSITFLCGDAGPLAVAAVL YHKMNEKQAEDCITRLIHL NKIDPHAPNEMLYGRIGYIYALLFVNKNFGVEKIPQSHIQQICETILTSGENLARKRNFTAKSPLMEWY QEYVYVGAHGLAGIYYYLMQPSLQVSQGLHSLVKPSVDYVCQLKFPSPGNYPCCI GDNRDLLVHWCHGAP GVIYMLIQAYKVFREKYLCDAYQCADVIWQYGLLKKGYGLCHGSAGNAYAFLLYNLTQDMKYL YRACK FAEWCLEYGEHGCRTPDTPFSLFEGMAGTIYFLADLLVPTKARFPAPFEL</p> <p>TRTRPLEQKLI SEEDLAANDILDYKDDDDKV</p>
Tag:	C-Myc/DDK
Purity:	> 80% as determined by SDS-PAGE and Coomassie blue staining
Concentration:	>0.05 µg/µL as determined by microplate BCA method
Labeling Method:	Labeled with [U- <sup>13</sup> C <sub>6</sub> , <sup>15</sup> N <sub>4</sub> ]-L-Arginine and [U- <sup>13</sup> C <sub>6</sub> , <sup>15</sup> N <sub>2</sub> ]-L-Lysine
Buffer:	25 mM Tris-HCl, 100 mM glycine, pH 7.3
Storage:	Store at -80°C. Avoid repeated freeze-thaw cycles.
Stability:	Stable for 3 months from receipt of products under proper storage and handling conditions.
RefSeq:	<u>NP_001130046</u>
RefSeq Size:	4531
RefSeq ORF:	1197
Synonyms:	GPR69A; p40
Locus ID:	10314



[View online »](#)

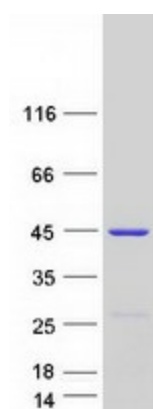
UniProt ID: [O43813](#), [Q53TN2](#)

Cytogenetics: 2q34

**Summary:** This gene encodes a loosely associated peripheral membrane protein related to the LanC family of bacterial membrane-associated proteins involved in the biosynthesis of antimicrobial peptides. This protein may play a role as a peptide-modifying enzyme component in eukaryotic cells. Previously considered a member of the G-protein-coupled receptor superfamily, this protein is now in the LanC family. Multiple alternatively spliced variants, encoding the same protein, have been identified. [provided by RefSeq, Nov 2008]

**Protein Families:** Druggable Genome

### Product images:



Coomassie blue staining of purified LANCL1 protein (Cat# [TP327716]). The protein was produced from HEK293T cells transfected with LANCL1 cDNA clone (Cat# [RC227716]) using MegaTran 2.0 (Cat# [TT210002]).