

Product datasheet for PH327713

ROBO1 (NM_001145844) Human Mass Spec Standard

Product data:

Product Type:	Mass Spec Standards
Description:	ROBO1 MS Standard C13 and N15-labeled recombinant protein (NP_001139316)
Species:	Human
Expression Host:	HEK293
Expression cDNA Clone or AA Sequence:	RC227713
Predicted MW:	175.7 kDa
Protein Sequence:	>RC227713 representing NM_001145844 Red=Cloning site Green=Tags(s)

MIAEPAHFYLFGLICLCSGSRRLRQEDFPFRIVEHPSDLIVSKGEPATLNCKAEGRPTPTIEWYKGGERVE
TDKDDPRSHRMLLPSSGLFFLRIVHGRKSRPDEGVYVCVARNYLGEAVSHNASLEVAAILRDDFRQNPDSV
MVAVGEPAVMECQPPRGHPEPTISWKKDGSPLDDKDERITIRGGKLMITYTRKSDAGKYVCVTNMVGER
ESEVAELTVLERPSFVKRPSNLAVTVDDSAEFKCEARGDPVPTVRWRKDDGELPKSRYEIRDHTLTKIRK
VTAGDMGSYTCVAENMVGKAEASATLTVQVGSEPPHFVVKPRDQVVALGRVTFQCEATGNPQPAIFWRR
EGSQNLLFSYQPPQSSSRFSVSQTGDLTITNVQRSDVGYICQTLNVAGSIITKAYLEVTDVIADRPPPV
IRQGPVNQTVAVDGTFFVLSCVATGSPVPTILWRKDGVLVSTQDSRIKQLENGVLQIRYAKLGDTRGYTCI
ASTPSGEATWSAYIEVQEFQVPPRPTDPNLIPSAPSKPEVTDVSRNTVTLVSWQPNLNSGATPTSYII
EAFSHASGSSWQTVVAENVKTETSAIKGLKPNAIYLFVRAANAYGISDPSQISDPVKTQDVLPTSQGVHD
KQVQRELGNVAVLHLHNPTVLSSSSIEVHWTVDDQSQYIQGYKILYRPSGANHGESDWLVFEVTRPAKNSV
VIPDLRKGVNVEIKARPFNEFQGADSEIKFAKLEEAPSAPPQVTVSKNDGNGTAILVSWQPPPEDTQ
NGMVQYKVVWCLGNETRYHINKTVDGSTFSVVIPLVPGIRYSVEVAASTGAGSGVKSEPQFIQLDAHGN
PVSPEDQVSLAQIISDVVKQPAFIAGIGAACWIIIMVFSIWL YRHRKKRNGLTSTYAGIRKVTYQRGGEA
VSSGGRPGLLNISEPAAPWLADTWPNTGNNHNDCSI SCCTAGNGNSDNL TTYSRPADCIANYNNQLDN
KQTNLMLESTVYGDVDLSNKINEMKTFNSPNLKDGRFVNPSGQPTPYATTQLIQSNLSNNMNGSGDSG
EKHWKPLGQKQEVAPVQYNIIVEQNKLNKDYRANDTVPPPTIPYNQSYDQNTGGSYNSSDRGSSTSGSQGH
KKGARTPKVPKQGGMNWADLLPPPAHPPPHSNSEEYNI SVDESVDQEMPCVPVPPARMYLQDDELEEEED
ERGTPPVVARGAASSPAAVSYSHQSTATLTPSPQEELQPMLQDCPEETGHMQHQPDRRRQPVSPPPPRPI
SPPHTYGYISGPLVSDMDTDAPEEEEEDEADMEVAKMQTRRLLLRGLEQTPASSVGDLESSVTGSMINGWG
SASEEDNISSGRSSVSSSDGSFFTDADFQAQAVAAAAYAGLKVARRQMQDAAGRRHFHASQCPRPTSPVS
TDSNMSAAVMQTRPAKLLKHQPGHLRRETYTDDLPPPPVPPPAIKSPTAQSKTQLEVRPVVVPKLPMSD
ARTDRSSDRKGSSYKREVLDGRQVDMRTNPGDPREAEQQNDGKGRGNKAAKRDLPKAKTHLIQEDIL
PYCRPTFPTSNPRDPSSSSSMSSRSGSRQREQANVGRRNAEMQVLLGGYERGEDNNEELETES

TRTRPLEQKLI SEEDLAANDILDYKDDDDKV

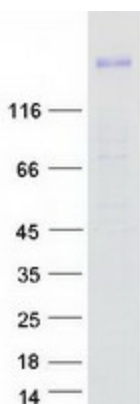
Tag: C-Myc/DDK



[View online »](#)

Purity:	> 80% as determined by SDS-PAGE and Coomassie blue staining
Concentration:	50 ug/ml as determined by BCA
Labeling Method:	Labeled with [U- ¹³ C ₆ , ¹⁵ N ₄]-L-Arginine and [U- ¹³ C ₆ , ¹⁵ N ₂]-L-Lysine
Buffer:	100 mM glycine, 25 mM Tris-HCl, pH 7.3. Store at -80°C. Avoid repeated freeze-thaw cycles. Stable for 3 months from receipt of products under proper storage and handling conditions.
RefSeq:	NP_001139316
RefSeq ORF:	4818
Synonyms:	axon guidance receptor; DUTT1; FLJ21882; MGC131599; MGC133277; roundabout, axon guidance receptor, homolog 1 (Drosophila); roundabout 1; SAX3
Locus ID:	6091
Cytogenetics:	3p12.3
Summary:	Bilateral symmetric nervous systems have special midline structures that establish a partition between the two mirror image halves. Some axons project toward and across the midline in response to long-range chemoattractants emanating from the midline. The product of this gene is a member of the immunoglobulin gene superfamily and encodes an integral membrane protein that functions in axon guidance and neuronal precursor cell migration. This receptor is activated by SLIT-family proteins, resulting in a repulsive effect on glioma cell guidance in the developing brain. A related gene is located at an adjacent region on chromosome 3. Multiple transcript variants encoding different isoforms have been found for this gene. [provided by RefSeq, Mar 2009]
Protein Families:	Druggable Genome
Protein Pathways:	Axon guidance

Product images:



Coomassie blue staining of purified ROBO1 protein (Cat# [TP327713]). The protein was produced from HEK293T cells transfected with ROBO1 cDNA clone (Cat# [RC227713]) using MegaTran 2.0 (Cat# [TT210002]).