

## Product datasheet for PH327709

### JMJD5 (KDM8) (NM\_001145348) Human Mass Spec Standard

#### Product data:

Product Type:	Mass Spec Standards
Description:	JMJD5 MS Standard C13 and N15-labeled recombinant protein (NP_001138820)
Species:	Human
Expression Host:	HEK293
Expression cDNA Clone or AA Sequence:	RC227709
Predicted MW:	50.7 kDa
Protein Sequence:	>RC227709 representing NM_001145348 Red=Cloning site Green=Tags(s)  MSREKCSPGEGAEEGRGSEASGLKASAGHGTEPAGGGPMAGDTHCPAEPLAREGTLWEALRALLPHSKED LKLDLGKEVERSVTLLQRATELFYEGRRDECLQSSEVILDYSWEKLNLTGTWQDVQKDWRRVYAIGCLLK ALCLCQAPEDANTVAAALRVCDMGLLMGAAILGDILLKVAAILQTHLPGKRPARGSLPEQPCTKKARADH GLIPDVKLEKTPRLHRPSLQHFREQFLVGRPVILKGVADHWPCMQKWSLEYIQEIAGCRTVPVEVGSR YTDEEWSQTLMTVNEFISKYIVNEPRDVGylaQHQLFDQIPELKQDISIPDYCSLGDGEEEEITINAWFG PQGTISPLHQDPQQNFLVQVMGRKYIRLYSPQESGALYPHDTHLLHNTSQVDVENPDLEKFKFAKAPFL SCILSPGEILFIPVKYWHYVRALDLSFSVSFWWS  TRTRPLEQKLISEEDLAANDILDYKDDDDKV
Tag:	C-Myc/DDK
Purity:	> 80% as determined by SDS-PAGE and Coomassie blue staining
Concentration:	>0.05 µg/µL as determined by microplate BCA method
Labeling Method:	Labeled with [U- <sup>13</sup> C <sub>6</sub> , <sup>15</sup> N <sub>4</sub> ]-L-Arginine and [U- <sup>13</sup> C <sub>6</sub> , <sup>15</sup> N <sub>2</sub> ]-L-Lysine
Buffer:	25 mM Tris-HCl, 100 mM glycine, pH 7.3
Storage:	Store at -80°C. Avoid repeated freeze-thaw cycles.
Stability:	Stable for 3 months from receipt of products under proper storage and handling conditions.
RefSeq:	<u>NP_001138820</u>
RefSeq ORF:	1362
Synonyms:	JMJD5
Locus ID:	79831



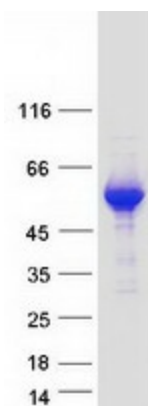
[View online »](#)

UniProt ID: [Q8N371](#)

Cytogenetics: 16p12.1

Summary: This gene likely encodes a histone lysine demethylase. Studies of a similar protein in mouse indicate a potential role for this protein as a tumor suppressor. Alternatively spliced transcript variants have been described.[provided by RefSeq, Feb 2009]

### Product images:



Coomassie blue staining of purified KDM8 protein (Cat# [TP327709]). The protein was produced from HEK293T cells transfected with KDM8 cDNA clone (Cat# [RC227709]) using MegaTran 2.0 (Cat# [TT210002]).