

Product datasheet for PH327699

PPHLN1 (NM_001143789) Human Mass Spec Standard

Product data:

Product Type:	Mass Spec Standards
Description:	PPHLN1 MS Standard C13 and N15-labeled recombinant protein (NP_001137261)
Species:	Human
Expression Host:	HEK293
Expression cDNA Clone or AA Sequence:	RC227699
Predicted MW:	33.7 kDa
Protein Sequence:	>RC227699 representing NM_001143789 Red=Cloning site Green=Tags(s)

MWSEGRYERYERIPRERAPPRSHPSDESGYRWRDDHSASRQPEYRDMRDGFRRKSFYSSHYARERSFYKR
DNTFFRESVPVGRKDSPHSRSGSSVSSRSYSPERSKSYSFHQSQHRNKERPVSQSLKTSRDTSPSSGSAVSS
SKVLDKPSRLTEKELAEAASKWAAEKLEKSDESNLPEISEYEAGSTAPLFTDQPEEPESNTTHGIELFED
SQLTTRSKAIASKTKEIEQVYRQDCETFGMVVKMLIEKDP SLEKSIQFALRQNLHEIGERCVEELKHFIA
EYDTSTQDFGEPF

TRTRPLEQKLI SEEDLAANDILDYKDDDDKV

Tag:	C-Myc/DDK
Purity:	> 80% as determined by SDS-PAGE and Coomassie blue staining
Concentration:	>0.05 µg/µL as determined by microplate BCA method
Labeling Method:	Labeled with [U- ¹³ C ₆ , ¹⁵ N ₄]-L-Arginine and [U- ¹³ C ₆ , ¹⁵ N ₂]-L-Lysine
Buffer:	25 mM Tris-HCl, 100 mM glycine, pH 7.3
Storage:	Store at -80°C. Avoid repeated freeze-thaw cycles.
Stability:	Stable for 3 months from receipt of products under proper storage and handling conditions.
RefSeq:	NP_001137261
RefSeq ORF:	879
Synonyms:	CR; HSPC206; HSPC232
Locus ID:	51535
UniProt ID:	Q8NEY8

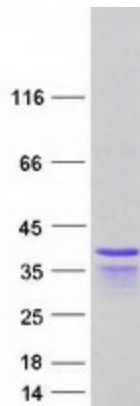


[View online »](#)

Cytogenetics: 12q12

Summary: The protein encoded by this gene is one of the several proteins that become sequentially incorporated into the cornified cell envelope during the terminal differentiation of keratinocyte at the outer layers of epidermis. This protein interacts with periplakin, which is known as a precursor of the cornified cell envelope. The cellular localization pattern and insolubility of this protein suggest that it may play a role in epithelial differentiation and contribute to epidermal integrity and barrier formation. Multiple alternatively spliced transcript variants encoding distinct isoforms have been observed. [provided by RefSeq, Jul 2008]

Product images:



Coomassie blue staining of purified PPHLN1 protein (Cat# [TP327699]). The protein was produced from HEK293T cells transfected with PPHLN1 cDNA clone (Cat# [RC227699]) using MegaTran 2.0 (Cat# [TT210002]).