

Product datasheet for PH327688

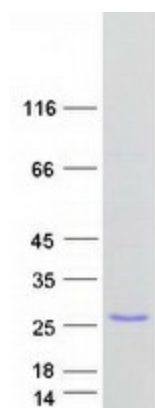
TRAPPC3L (NM_001139444) Human Mass Spec Standard

Product data:

Product Type:	Mass Spec Standards
Description:	BET3L MS Standard C13 and N15-labeled recombinant protein (NP_001132916)
Species:	Human
Expression Host:	HEK293
Expression cDNA Clone or	RC227688
AA Sequence:	
Predicted MW:	20.4 kDa
Protein Sequence:	<p>>RC227688 representing NM_001139444</p> <p>Red=Cloning site Green=Tags(s)</p> <p>MSRPAHRRPEYHKINKDLFVLTYGALVAQLCKDYEKDEDVNQYLDKMGYGIGTRLVEDFLARSCVGRCHS YSEIIDIIAQVAFKMYLGITPSVTCNNSSKNEFSLEKNPLVEFVEELPAGRSSLCYCYNLLCGIIRGAL EMVHLAADVTFLQDRLKGDSVTEIGITFLKKRDEKKYRGKK</p> <p>TRTRPLEQKLISEEDLAANDILDYKDDDDKV</p>
Tag:	C-Myc/DDK
Purity:	> 80% as determined by SDS-PAGE and Coomassie blue staining
Concentration:	>0.05 µg/µL as determined by microplate BCA method
Labeling Method:	Labeled with [U- ¹³ C6, ¹⁵ N4]-L-Arginine and [U- ¹³ C6, ¹⁵ N2]-L-Lysine
Buffer:	25 mM Tris-HCl, 100 mM glycine, pH 7.3
Storage:	Store at -80°C. Avoid repeated freeze-thaw cycles.
Stability:	Stable for 3 months from receipt of products under proper storage and handling conditions.
RefSeq:	NP_001132916
RefSeq ORF:	543
Synonyms:	bA259P20.2; BET3L



Locus ID:	100128327
UniProt ID:	Q5T215
Cytogenetics:	6q22.1
Summary:	May play a role in vesicular transport from endoplasmic reticulum to Golgi.[UniProtKB/Swiss-Prot Function]

Product images:

Coomassie blue staining of purified TRAPPC3L protein (Cat# [TP327688]). The protein was produced from HEK293T cells transfected with TRAPPC3L cDNA clone (Cat# [RC227688]) using MegaTran 2.0 (Cat# [TT210002]).