

Product datasheet for PH327656

DHRS1 (NM_001136050) Human Mass Spec Standard

Product data:

| | |
|---------------------------------------|---|
| Product Type: | Mass Spec Standards |
| Description: | DHRS1 MS Standard C13 and N15-labeled recombinant protein (NP_001129522) |
| Species: | Human |
| Expression Host: | HEK293 |
| Expression cDNA Clone or AA Sequence: | RC227656 |
| Predicted MW: | 33.9 kDa |
| Protein Sequence: | >RC227656 protein sequence Red =Cloning site Green =Tags(s) MAAPMNGQVCVVTGASRGIGRGIQLCKAGATVYITGRHLDLTVVAQEAQSLGGQCVPVCDSSQESE VRSLFEQVDREQQGRDLVLYNNAYAGVQTIINTRNKAFWETPASMWDDINNVGLRGHYFCSVYGARLMVP AGQGLIVVISSPGSLQYMFNVLYGVGKAACDKLAADCAHELRRHGVCVSLWPGIVQTELLKEHMAKEEV LQDPVLKQFKSAFSSAETTELSGKCVVALATDPNILLSGKVLPSCDLARRYGLRDVDGRPVQDYLSLSS VLSHVSGLGWLASYLPSFLRVPKWIIALYTSKF TRTRPLEQKLISEEDLAANDILDYKDDDDKV |
| Tag: | C-Myc/DDK |
| Purity: | > 80% as determined by SDS-PAGE and Coomassie blue staining |
| Concentration: | >0.05 µg/µL as determined by microplate BCA method |
| Labeling Method: | Labeled with [U- ¹³ C ₆ , ¹⁵ N ₄]-L-Arginine and [U- ¹³ C ₆ , ¹⁵ N ₂]-L-Lysine |
| Buffer: | 25 mM Tris-HCl, 100 mM glycine, pH 7.3 |
| Storage: | Store at -80°C. Avoid repeated freeze-thaw cycles. |
| Stability: | Stable for 3 months from receipt of products under proper storage and handling conditions. |
| RefSeq: | NP_001129522 |
| RefSeq Size: | 1495 |
| RefSeq ORF: | 939 |
| Synonyms: | SDR19C1 |
| Locus ID: | 115817 |



[View online »](#)

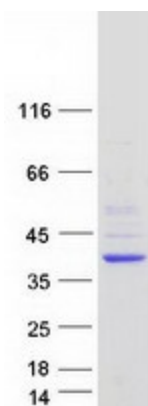
UniProt ID: [Q96LJ7](#)

Cytogenetics: 14q12

Summary: This gene encodes a member of the short-chain dehydrogenases/reductases (SDR) family. The encoded enzyme contains a conserved catalytic domain and likely functions as an oxidoreductase. Multiple alternatively spliced variants, encoding the same protein, have been identified. [provided by RefSeq, Nov 2008]

Protein Families: Druggable Genome

Product images:



Coomassie blue staining of purified DHRS1 protein (Cat# [TP327656]). The protein was produced from HEK293T cells transfected with DHRS1 cDNA clone (Cat# [RC227656]) using MegaTran 2.0 (Cat# [TT210002]).