

## Product datasheet for PH327420

### PRAP1 (NM\_001145201) Human Mass Spec Standard

#### Product data:

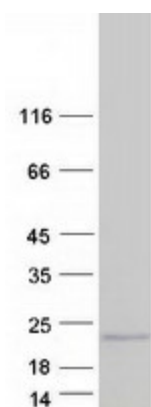
Product Type:	Mass Spec Standards
Description:	PRAP1 MS Standard C13 and N15-labeled recombinant protein (NP_001138673)
Species:	Human
Expression Host:	HEK293
Expression cDNA Clone or AA Sequence:	RC227420
Predicted MW:	16.2 kDa
Protein Sequence:	>RC227420 representing NM_001145201 Red=Cloning site Green=Tags(s)  MRRLLLVTSLVVVLLWEAGAVPAPKVPIKMQVKHWPSEQDPEKAWGARVVEPPEKDDQLVVLFPVQKPKL LTTEEKPRGTKAWMETEDTLGRVLSPEPDHDSL YHPPPEEDQGEERPR LWMPNHQVLLGPEEDQDHIYH PQ  TRTRPLEQKLI SEEDLAANDILDYKDDDDKV
Tag:	C-Myc/DDK
Purity:	> 80% as determined by SDS-PAGE and Coomassie blue staining
Concentration:	>0.05 µg/µL as determined by microplate BCA method
Labeling Method:	Labeled with [U- 13C6, 15N4]-L-Arginine and [U- 13C6, 15N2]-L-Lysine
Buffer:	25 mM Tris-HCl, 100 mM glycine, pH 7.3
Storage:	Store at -80°C. Avoid repeated freeze-thaw cycles.
Stability:	Stable for 3 months from receipt of products under proper storage and handling conditions.
RefSeq:	<u>NP_001138673</u>
RefSeq ORF:	426
Synonyms:	PRO1195; UPA
Locus ID:	118471
UniProt ID:	<u>Q96NZ9</u> , <u>A6XND8</u>
Cytogenetics:	10q26.3



[View online »](#)

**Summary:** May play an important role in maintaining normal growth homeostasis in epithelial cells.  
[UniProtKB/Swiss-Prot Function]

**Product images:**



Coomassie blue staining of purified PRAP1 protein (Cat# [TP327420]). The protein was produced from HEK293T cells transfected with PRAP1 cDNA clone (Cat# [RC227420]) using MegaTran 2.0 (Cat# [TT210002]).