

Product datasheet for PH327378

CITED1 (NM_001144886) Human Mass Spec Standard

Product data:

Product Type:	Mass Spec Standards
Description:	CITED1 MS Standard C13 and N15-labeled recombinant protein (NP_001138358)
Species:	Human
Expression Host:	HEK293
Expression cDNA Clone or AA Sequence:	RC227378
Predicted MW:	19.9 kDa
Protein Sequence:	>RC227378 protein sequence Red=Cloning site Green=Tags(s) MPTTSRPALDVKGGTSPAKEDANQEMSSVAYSNLAVKDRKAVAILHYPGVASNGTKASGAPTSSSGSPIG SPTTTPPTKPPSFLHPAPHLASMLQLKLNLSQYQGMAAATPGQPGEAGPLQNWDFGAQAGGAESLSPSA GAQSPAIDSDPVDEEVLMMLVVELGLDRANELPELWLGQNEFDFTADFPSSC TRTRPLEQKLI SEEDLAANDILDYKDDDDKV
Tag:	C-Myc/DDK
Purity:	> 80% as determined by SDS-PAGE and Coomassie blue staining
Concentration:	>0.05 µg/µL as determined by microplate BCA method
Labeling Method:	Labeled with [U- 13C6, 15N4]-L-Arginine and [U- 13C6, 15N2]-L-Lysine
Buffer:	25 mM Tris-HCl, 100 mM glycine, pH 7.3
Storage:	Store at -80°C. Avoid repeated freeze-thaw cycles.
Stability:	Stable for 3 months from receipt of products under proper storage and handling conditions.
RefSeq:	NP_001138358
RefSeq Size:	903
RefSeq ORF:	579
Synonyms:	MSG1
Locus ID:	4435
UniProt ID:	Q99966



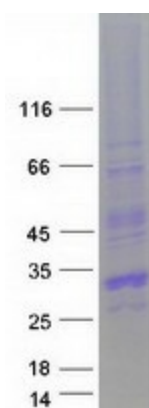
[View online »](#)

Cytogenetics: Xq13.1

Summary: This gene encodes a member of the CREB-binding protein/p300-interacting transactivator with Asp/Glu-rich C-terminal domain (CITED) family of proteins. The encoded protein, also known as melanocyte-specific gene 1, may function as a transcriptional coactivator and may play a role in pigmentation of melanocytes. Alternatively spliced transcript variants have been described. [provided by RefSeq, Jan 2009]

Protein Families: Transcription Factors

Product images:



Coomassie blue staining of purified CITED1 protein (Cat# [TP327378]). The protein was produced from HEK293T cells transfected with CITED1 cDNA clone (Cat# [RC227378]) using MegaTran 2.0 (Cat# [TT210002]).