

Product datasheet for PH327328

Annexin A2 (ANXA2) (NM_001136015) Human Mass Spec Standard

Product data:

Product Type:	Mass Spec Standards
Description:	ANXA2 MS Standard C13 and N15-labeled recombinant protein (NP_001129487)
Species:	Human
Expression Host:	HEK293
Expression cDNA Clone or AA Sequence:	RC227328
Predicted MW:	38.6 kDa
Protein Sequence:	>RC227328 protein sequence Red=Cloning site Green=Tags(s)

MSTVHEILCKLSLEGDHSTPPSAYGSVKAYTNFDAERDALNIETAIKTKGVDEVTIVNILTNRNAQRQD
IAFAYQRRTKKELASALKSALSGHLETVILGLLKTTPAQYDASELKASKMGLGTDEDSLIEIICSRTNQEL
QEINRVYKEMYKTDLEKDIISDTSGDFRKL MVALAKGRRRAEDGSVIDYELIDQDARDLYDAGVKRKGTDV
PKWISIMTERSVPHLQKVFDRYKSYSPYDMLIESIRKEVKGDLENAFLNLVQCIQNKPLYFADRLYDSMKG
KGTDRDKVLRIMVSRSEVDMKIRSEFKRKYGKSLYYYIQDQTKGDYQKALLYLCGGDD

TRTRPLEQKLI SEEDLAANDILDYKDDDDKV

Tag:	C-Myc/DDK
Purity:	> 80% as determined by SDS-PAGE and Coomassie blue staining
Concentration:	>0.05 µg/µL as determined by microplate BCA method
Labeling Method:	Labeled with [U- ¹³ C ₆ , ¹⁵ N ₄]-L-Arginine and [U- ¹³ C ₆ , ¹⁵ N ₂]-L-Lysine
Buffer:	25 mM Tris-HCl, 100 mM glycine, pH 7.3
Storage:	Store at -80°C. Avoid repeated freeze-thaw cycles.
Stability:	Stable for 3 months from receipt of products under proper storage and handling conditions.
RefSeq:	<u>NP_001129487</u>
RefSeq Size:	1665
RefSeq ORF:	1017
Synonyms:	ANX2; ANX2L4; CAL1H; HEL-S-270; LIP2; LPC2; LPC2D; P36; PAP-IV
Locus ID:	302



[View online »](#)

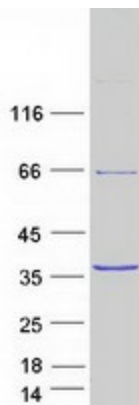
UniProt ID: [P07355](#), [A0A024R5Z7](#)

Cytogenetics: 15q22.2

Summary: This gene encodes a member of the annexin family. Members of this calcium-dependent phospholipid-binding protein family play a role in the regulation of cellular growth and in signal transduction pathways. This protein functions as an autocrine factor which heightens osteoclast formation and bone resorption. This gene has three pseudogenes located on chromosomes 4, 9 and 10, respectively. Multiple alternatively spliced transcript variants encoding different isoforms have been found for this gene. Annexin A2 expression has been found to correlate with resistance to treatment against various cancer forms. [provided by RefSeq, Dec 2019]

Protein Families: Druggable Genome, Secreted Protein, Stem cell - Pluripotency

Product images:



Coomassie blue staining of purified ANXA2 protein (Cat# [TP327328]). The protein was produced from HEK293T cells transfected with ANXA2 cDNA clone (Cat# [RC227328]) using MegaTran 2.0 (Cat# [TT210002]).