

## Product datasheet for PH327214

### MEF2B (NM\_001145785) Human Mass Spec Standard

#### Product data:

Product Type:	Mass Spec Standards
Description:	MEF2B MS Standard C13 and N15-labeled recombinant protein (NP_001139257)
Species:	Human
Expression Host:	HEK293
Expression cDNA Clone or AA Sequence:	RC227214
Predicted MW:	39 kDa
Protein Sequence:	>RC227214 representing NM_001145785 <span style="color: red;">Red</span> =Cloning site <span style="color: green;">Green</span> =Tags(s)

MGRKKIQISRILDQRNRQVTFTRKRFGLMKKAYELSVLCDCEIALIIFNSANRLFQYASTMDRVLLKYT  
 EYSEPHESRTNTDILETLKRRGIGLDGPELEPDEGPPEEGEKFRRLAGEGDPALPRPRLYPAAPAMPSP  
 DVVYGALPPPGCDPSGLGEALPAQSRSPFRPAAPKAGPPGLVHPLFSPSHLTSKTPPPLYLPTEGRRSD  
 LPGGLAGPRGGLNTRSLSYGLQNPCSTATPGPPLGSFPFLPGGPPEYGLGDP PPPPGLLQPPTLAPWQP  
 SRGDGPPAVSSQPSGGRSLGEEGPTRGASPTPPVSIKSERLSAPGGPGDFPKTFPYPLLLARSLAEP  
 LRPGPALRRLPLADGWPR

TRTRPLEQKLISEEDLAANDILDYKDDDDKV

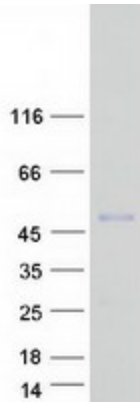
Tag:	C-Myc/DDK
Purity:	> 80% as determined by SDS-PAGE and Coomassie blue staining
Concentration:	>0.05 µg/µL as determined by microplate BCA method
Labeling Method:	Labeled with [U- <sup>13</sup> C <sub>6</sub> , <sup>15</sup> N <sub>4</sub> ]-L-Arginine and [U- <sup>13</sup> C <sub>6</sub> , <sup>15</sup> N <sub>2</sub> ]-L-Lysine
Buffer:	25 mM Tris-HCl, 100 mM glycine, pH 7.3
Storage:	Store at -80°C. Avoid repeated freeze-thaw cycles.
Stability:	Stable for 3 months from receipt of products under proper storage and handling conditions.
RefSeq:	<u>NP_001139257</u>
RefSeq ORF:	1104
Synonyms:	RSRFR2
Locus ID:	100271849
UniProt ID:	<u>Q02080, A0A024R7K5</u>


[View online »](#)

**Cytogenetics:** 19p13.11

**Summary:** The product of this gene is a member of the MADS/MEF2 family of DNA binding proteins. The protein is thought to regulate gene expression, including expression of the smooth muscle myosin heavy chain gene. This region undergoes considerable alternative splicing, with transcripts supporting two non-overlapping loci (GeneID 729991 and 100271849) as well as numerous read-through transcripts that span both loci (annotated as GeneID 4207). Several isoforms of this protein are expressed from either this locus or from some of the read-through transcripts annotated on GeneID 4207. [provided by RefSeq, Jan 2014]

### Product images:



Coomassie blue staining of purified MEF2B protein (Cat# [TP327214]). The protein was produced from HEK293T cells transfected with MEF2B cDNA clone (Cat# [RC227214]) using MegaTran 2.0 (Cat# [TT210002]).