

Product datasheet for PH327190

TOM1 (NM_001135730) Human Mass Spec Standard

Product data:

Product Type:	Mass Spec Standards
Description:	TOM1 MS Standard C13 and N15-labeled recombinant protein (NP_001129202)
Species:	Human
Expression Host:	HEK293
Expression cDNA Clone or AA Sequence:	RC227190
Predicted MW:	48.5 kDa
Protein Sequence:	>RC227190 representing NM_001135730 Red=Cloning site Green=Tags(s)

MDFLLGNPFSSPVGQRIEKATDGSLSQEDWALNMEICDIINETEEGPKDALRAVKKRIVGNKNFHEVMLA
LTVLETVCVKNCGHRFHVLVASQDFVESVLVRTILPKNNPPTIVHDKVLNLIQTVFNSETQSGQDSVGTDS
SQQEDSGQHAAPLPAPPILSGDTPAPTPEQIGKLRSELEMVSGNVRVMSEMLTELVTQAEPADLELLQ
ELNRTCRAMQQRVLELIPQIANEQLTEELLIVNDLNNVFLRHERFERFRGTQTTKAPSEAEPADLIDM
GPDPAATGNLSSQLAGMNLGSSSVRAGLSLEASGRLEDEFDMFALTRGSSLADQRKEVKYEAPQATDGL
AGALDARQQSTGAIPVTQAQLMEDIEQWLSTDVGNDAEPPKGVTSSEFDKFLEERAKAADRLPNLSSPSA
EGPPGPPSGPAPRKKKTQEKDDDMFLAL

TRTRPLEQKLI SEEDLAANDILDYKDDDDKV

Tag:	C-Myc/DDK
Purity:	> 80% as determined by SDS-PAGE and Coomassie blue staining
Concentration:	>0.05 µg/µL as determined by microplate BCA method
Labeling Method:	Labeled with [U- ¹³ C ₆ , ¹⁵ N ₄]-L-Arginine and [U- ¹³ C ₆ , ¹⁵ N ₂]-L-Lysine
Buffer:	25 mM Tris-HCl, 100 mM glycine, pH 7.3
Storage:	Store at -80°C. Avoid repeated freeze-thaw cycles.
Stability:	Stable for 3 months from receipt of products under proper storage and handling conditions.
RefSeq:	<u>NP_001129202</u>
RefSeq ORF:	1341
Locus ID:	10043
UniProt ID:	<u>O60784, B3KUF5</u>



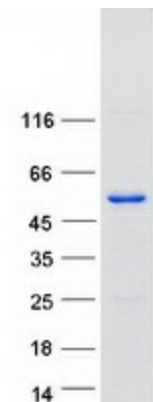
[View online »](#)

Cytogenetics: 22q12.3

Summary: This gene was identified as a target of the v-myb oncogene. The encoded protein shares its N-terminal domain in common with proteins associated with vesicular trafficking at the endosome. It is recruited to the endosomes by its interaction with endofin. Several alternatively spliced transcript variants encoding different isoforms have been found for this gene. [provided by RefSeq, Oct 2008]

Protein Families: Druggable Genome

Product images:



Coomassie blue staining of purified TOM1 protein (Cat# [TP327190]). The protein was produced from HEK293T cells transfected with TOM1 cDNA clone (Cat# [RC227190]) using MegaTran 2.0 (Cat# [TT210002]).