

Product datasheet for PH327169

SPART (NM_001142296) Human Mass Spec Standard

Product data:

Product Type:	Mass Spec Standards
Description:	SPG20 MS Standard C13 and N15-labeled recombinant protein (NP_001135768)
Species:	Human
Expression Host:	HEK293
Expression cDNA Clone or AA Sequence:	RC227169
Predicted MW:	72.9 kDa
Protein Sequence:	>RC227169 protein sequence Red=Cloning site Green=Tags(s)

MEQEPQNGEPAEIKIIREAYKKAFLFVNKGLNTDELGQKEEAKNYYKQIGHLLRGISISSKESEHTGTG
WESARQMQQMKETLQNVTRLEILEKGLATSLQNDLQEVPKLYPEFPPKDMCEKLPEPQSFSSAPQHA
VNGNTSTPSAGAVAAPASLSLPSQSCPAEAPPAYTPQAAEGHYTVSYGTDSGEFSSVGEFVYRNHSQPPP
LETGLDADELILIPNGVQIFFVNPAGEVSAPSYPGYLRIVRFLDNSLDTVLNRPPGFLQVCDWLYPLVP
DRSPVLKCTAGAYMFPDMLQAAGCFVGVVLSSELPEDDRELFEDLLRQMSDLRLQANWNRAEEENEFI
PGRTRPSSDQLKEASGTDVKQLDQGNKDVHRHGKRGKRAKDTSSSEVNLSHIVPCEPVPEEKPKELHEWS
EKVAHNILSGASWVSWGLVKGAEITGKAIQKGASKLRERIQPEEKVPEVSPAVTKGLYIAKQATGGAAKV
SQFLVDGVCTVANCVGKELAPHVKKHSGSKLVPESLKDKDKGKSPLDGAMVVAASSVQGFSTVWQGLECAA
KCIVNNVSAETVQTVRYKYGYNAGEATHHAVDSAVNVGVTAYNINNIIGIKAMVKKTATQTGHTLLEDYQI
VDNSQRENQEGAANVNRGEKDEQTKVEKAKKKDK

TRTRPLEQKLISEEDLAANDILDYKDDDDKV

Tag:	C-Myc/DDK
Purity:	> 80% as determined by SDS-PAGE and Coomassie blue staining
Concentration:	>0.05 µg/µL as determined by microplate BCA method
Labeling Method:	Labeled with [U- 13C6, 15N4]-L-Arginine and [U- 13C6, 15N2]-L-Lysine
Buffer:	25 mM Tris-HCl, 100 mM glycine, pH 7.3
Storage:	Store at -80°C. Avoid repeated freeze-thaw cycles.
Stability:	Stable for 3 months from receipt of products under proper storage and handling conditions.
RefSeq:	NP_001135768
RefSeq Size:	5014

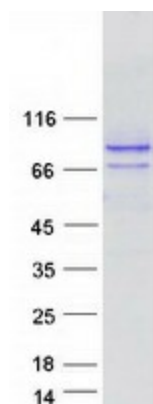


[View online »](#)

RefSeq ORF:	1998
Synonyms:	SPG20; TAHCCP1
Locus ID:	23111
UniProt ID:	Q8N0X7 , A0A024RDV9
Cytogenetics:	13q13.3

Summary: This gene encodes a protein containing a MIT (Microtubule Interacting and Trafficking molecule) domain, and is implicated in regulating endosomal trafficking and mitochondria function. The protein localizes to mitochondria and partially co-localizes with microtubules. Stimulation with epidermal growth factor (EGF) results in protein translocation to the plasma membrane, and the protein functions in the degradation and intracellular trafficking of EGF receptor. Multiple alternatively spliced variants, encoding the same protein, have been identified. Mutations associated with this gene cause autosomal recessive spastic paraplegia 20 (Troyer syndrome). [provided by RefSeq, Nov 2008]

Product images:



Coomassie blue staining of purified SPART protein (Cat# [TP327169]). The protein was produced from HEK293T cells transfected with SPART cDNA clone (Cat# [RC227169]) using MegaTran 2.0 (Cat# [TT210002]).