

## Product datasheet for PH327162

### SPART (NM\_001142295) Human Mass Spec Standard

#### Product data:

Product Type:	Mass Spec Standards
Description:	SPG20 MS Standard C13 and N15-labeled recombinant protein (NP_001135767)
Species:	Human
Expression Host:	HEK293
Expression cDNA Clone or AA Sequence:	RC227162
Predicted MW:	72.9 kDa
Protein Sequence:	>RC227162 protein sequence Red=Cloning site Green=Tags(s)

MEQEPQNGEPAEIKIIREAYKKAFLFVNKGLNTDELGQKEEAKNYYKQIGHLLRGISISSKESEHTGTG  
WESARQMQQMKETLQNVTRLEILEKGLATSLQNDLQEVPKLYPEFPPKDMCEKLEPQSFSSAPQHA  
VNGNTSTPSAGAVAAPASLSLPSQSCPAEAPPAYTPQAAEGHYTVSYGTDSGEFSSVGEFVYRNSQPPP  
LETGLDADELILIPNGVQIFFVNPAGEVSAPSYPGYLRIVRFLDNSLDTVLNRPPGFLQVCDWLYPLVP  
DRSPVLKCTAGAYMFPDMLQAAGCFVGVVLSSELPEDDRELFEDLLRQMSDLRLQANWNRREEEFQI  
PGRTRPSSDQLKEASGTDVQQLDQGNKDVHRHGKRGKRAKDTSSSEVNLSHIVPCEPVPEEKPKELHEWS  
EKVAHNILSGASWVSWGLVKGAEITGKAIQKGASKLRERIQPEEKVPEVSPAVTKGLYIAKQATGGAAKV  
SQFLVDGVCTVANCVGKELAPHVKKHGSKLVPESLKKDKDGKSPLDGAMVVAASSVQGFSTVWQGLECAA  
KCIVNNVSAETVQTVRYKYGYNAGEATHHAVDSAVNVGVTAYNINNIGIKAMVKKTATQTGHTLLEDYQI  
VDNSQRENQEGAANVNRGEKDEQTKVEKAKKKDK

TRTRPLEQKLISEEDLAANDILDYKDDDDKV

Tag:	C-Myc/DDK
Purity:	> 80% as determined by SDS-PAGE and Coomassie blue staining
Concentration:	>0.05 µg/µL as determined by microplate BCA method
Labeling Method:	Labeled with [U- 13C6, 15N4]-L-Arginine and [U- 13C6, 15N2]-L-Lysine
Buffer:	25 mM Tris-HCl, 100 mM glycine, pH 7.3
Storage:	Store at -80°C. Avoid repeated freeze-thaw cycles.
Stability:	Stable for 3 months from receipt of products under proper storage and handling conditions.
RefSeq:	<a href="#">NP_001135767</a>
RefSeq Size:	4962

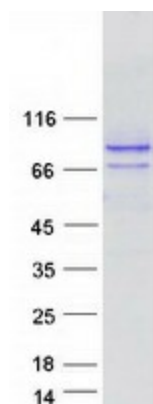


[View online »](#)

RefSeq ORF:	1998
Synonyms:	SPG20; TAHCCP1
Locus ID:	23111
UniProt ID:	<a href="#">Q8N0X7</a> , <a href="#">A0A024RDV9</a>
Cytogenetics:	13q13.3

**Summary:** This gene encodes a protein containing a MIT (Microtubule Interacting and Trafficking molecule) domain, and is implicated in regulating endosomal trafficking and mitochondria function. The protein localizes to mitochondria and partially co-localizes with microtubules. Stimulation with epidermal growth factor (EGF) results in protein translocation to the plasma membrane, and the protein functions in the degradation and intracellular trafficking of EGF receptor. Multiple alternatively spliced variants, encoding the same protein, have been identified. Mutations associated with this gene cause autosomal recessive spastic paraplegia 20 (Troyer syndrome). [provided by RefSeq, Nov 2008]

### Product images:



Coomassie blue staining of purified SPART protein (Cat# [TP327162]). The protein was produced from HEK293T cells transfected with SPART cDNA clone (Cat# [RC227162]) using MegaTran 2.0 (Cat# [TT210002]).