

Product datasheet for PH327155

SPART (NM_001142294) Human Mass Spec Standard

Product data:

| | |
|---------------------------------------|--|
| Product Type: | Mass Spec Standards |
| Description: | SPG20 MS Standard C13 and N15-labeled recombinant protein (NP_001135766) |
| Species: | Human |
| Expression Host: | HEK293 |
| Expression cDNA Clone or AA Sequence: | RC227155 |
| Predicted MW: | 72.9 kDa |
| Protein Sequence: | >RC227155 protein sequence Red=Cloning site Green=Tags(s) |

MEQEPQNGEPAEIKIIREAYKKAFLFVNKGLNTDELGQKEEAKNYYKQGIHLLRGISISSKESEHTGTG
WESARQMQQMKETLQNVTRLEILEKGLATSLQNDLQEVPKLYPEFPPKDMCEKLPEPQSFSSAPQHA
VNGNTSTPSAGAVAAPASLSLPSQSCPAEAPPAYTPQAAEGHYTVSYGTDGSEFSSVGEFVYRNHSQPPP
LETGLDADELILIPNGVQIFFVNPAGEVSAPSYPGYLRIVRFLDNSLDTVLNRPPGFLQVCDWLYPLVP
DRSPVLKCTAGAYMFPDMLQAAGCFVGVVLSSELPEDDRELFEDLLRQMSDLRLQANWNRAEEENEFI
PGRTRPSSDQLKEASGTDVKQLDQGNKDVHRHGKRGKRAKDTSSSEEVNLSHIVPCEPVPEEKPKELHEWS
EKVAHNILSGASWVSWGLVKGAEITGKAIQKGASKLRERIQPEEKVPEVSPAVTKGLYIAKQATGGAAKV
SQFLVDGVCTVANCVGKELAPHVKKHSGSKLVPESLKDKDKGKSPLDGAMVVAASSVQGFSTVWQGLECAA
KCIVNNVSAETVQTVRYKYGYNAGEATHHAVDSAVNVGVTAYNINNIIGIKAMVKKTATQTGHTLLEDYQI
VDNSQRENQEGAANVNRGEKDEQTKVEKAKKKDK

TRTRPLEQKLISEEDLAANDILDYKDDDDKV

| | |
|------------------|--|
| Tag: | C-Myc/DDK |
| Purity: | > 80% as determined by SDS-PAGE and Coomassie blue staining |
| Concentration: | >0.05 µg/µL as determined by microplate BCA method |
| Labeling Method: | Labeled with [U- 13C6, 15N4]-L-Arginine and [U- 13C6, 15N2]-L-Lysine |
| Buffer: | 25 mM Tris-HCl, 100 mM glycine, pH 7.3 |
| Storage: | Store at -80°C. Avoid repeated freeze-thaw cycles. |
| Stability: | Stable for 3 months from receipt of products under proper storage and handling conditions. |
| RefSeq: | NP_001135766 |
| RefSeq Size: | 4838 |

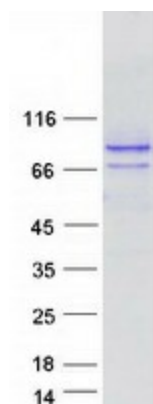


[View online »](#)

| | |
|---------------|---|
| RefSeq ORF: | 1998 |
| Synonyms: | SPG20; TAHCCP1 |
| Locus ID: | 23111 |
| UniProt ID: | Q8N0X7 , A0A024RDV9 |
| Cytogenetics: | 13q13.3 |

Summary: This gene encodes a protein containing a MIT (Microtubule Interacting and Trafficking molecule) domain, and is implicated in regulating endosomal trafficking and mitochondria function. The protein localizes to mitochondria and partially co-localizes with microtubules. Stimulation with epidermal growth factor (EGF) results in protein translocation to the plasma membrane, and the protein functions in the degradation and intracellular trafficking of EGF receptor. Multiple alternatively spliced variants, encoding the same protein, have been identified. Mutations associated with this gene cause autosomal recessive spastic paraplegia 20 (Troyer syndrome). [provided by RefSeq, Nov 2008]

Product images:



Coomassie blue staining of purified SPART protein (Cat# [TP327155]). The protein was produced from HEK293T cells transfected with SPART cDNA clone (Cat# [RC227155]) using MegaTran 2.0 (Cat# [TT210002]).