

Product datasheet for PH327010

TMEM169 (NM_001142310) Human Mass Spec Standard

Product data:

Product Type:	Mass Spec Standards
Description:	TMEM169 MS Standard C13 and N15-labeled recombinant protein (NP_001135782)
Species:	Human
Expression Host:	HEK293
Expression cDNA Clone or AA Sequence:	RC227010
Predicted MW:	33.6 kDa
Protein Sequence:	>RC227010 protein sequence Red=Cloning site Green=Tags(s) MEEPTAVEGQVQLPSPHQGSLRKAVAAALALDGESTMGHRKKRKRKESRPESIIYRSDNEKTDEEPGESE GGDQPKKEEGDDFLDYPVDDMWNLPLDSRYVTLTGTITRGGKKGQMVDIHVTLTEKELQELTKPKESSR ETTPEGRMACQMGADRGPHVVLWTLICLPVVFILSFVVSFYGGTITWYNI FLVYNEERTFWHKISYCPCL VLFYFVLIIMAMASSLGLYAAVVQLSWSWEAWWQAARDMEKGF CGWLCSKLGLED CSPYSIVELLES DNIS STLSNKDPIQE VETSTV TRTRPLEQKLI SEEDLAANDILDYKDDDDKV
Tag:	C-Myc/DDK
Purity:	> 80% as determined by SDS-PAGE and Coomassie blue staining
Concentration:	>0.05 µg/µL as determined by microplate BCA method
Labeling Method:	Labeled with [U- ¹³ C ₆ , ¹⁵ N ₄]-L-Arginine and [U- ¹³ C ₆ , ¹⁵ N ₂]-L-Lysine
Buffer:	25 mM Tris-HCl, 100 mM glycine, pH 7.3
Storage:	Store at -80°C. Avoid repeated freeze-thaw cycles.
Stability:	Stable for 3 months from receipt of products under proper storage and handling conditions.
RefSeq:	NP_001135782
RefSeq Size:	3477
RefSeq ORF:	891
Locus ID:	92691
UniProt ID:	Q96HH4 , A0A024R430

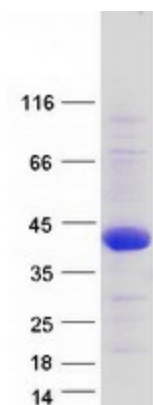


[View online »](#)

Cytogenetics: 2q35

Protein Families: Transmembrane

Product images:



Coomassie blue staining of purified TMEM169 protein (Cat# [TP327010]). The protein was produced from HEK293T cells transfected with TMEM169 cDNA clone (Cat# [RC227010]) using MegaTran 2.0 (Cat# [TT210002]).