

Product datasheet for PH326999

14-3-3 zeta (YWHAZ) (NM_001135700) Human Mass Spec Standard

Product data:

Product Type:	Mass Spec Standards
Description:	YWHAZ MS Standard C13 and N15-labeled recombinant protein (NP_001129172)
Species:	Human
Expression Host:	HEK293
Expression cDNA Clone or AA Sequence:	RC226999
Predicted MW:	27.6 kDa
Protein Sequence:	>RC226999 representing NM_001135700 Red=Cloning site Green=Tags(s) MDKNELVQKAKLAEQAERYDDMAACMKSVTEQGAELSNEERNLLSVAYKNVVGARRSSWRVSSIEQKTE GAEKKQQMAREYREKIETELRDIENDVLSLLEKFLIPNASQAESKVFYLMKMGDYRYLAEVAAGDDKKG IVDQSQQAYQEAFEISKKEMQPTHPIRLGLALNFSVFYIEILNSPEKACSLAKTAFDEAIAELDTLSEES YKDSTLIMQLLRDNLTLWTSDTQGDEAEAGEGGEN TRTRPLEQKLISEEDLAANDILDYKDDDDKV
Tag:	C-Myc/DDK
Purity:	> 80% as determined by SDS-PAGE and Coomassie blue staining
Concentration:	>0.05 µg/µL as determined by microplate BCA method
Labeling Method:	Labeled with [U- ¹³ C ₆ , ¹⁵ N ₄]-L-Arginine and [U- ¹³ C ₆ , ¹⁵ N ₂]-L-Lysine
Buffer:	25 mM Tris-HCl, 100 mM glycine, pH 7.3
Storage:	Store at -80°C. Avoid repeated freeze-thaw cycles.
Stability:	Stable for 3 months from receipt of products under proper storage and handling conditions.
RefSeq:	NP_001129172
RefSeq ORF:	735
Synonyms:	14-3-3-zeta; HEL-S-3; HEL-S-93; HEL4; KCIP-1; POPCHAS; YWHAD
Locus ID:	7534
UniProt ID:	P63104 , D0PNI1
Cytogenetics:	8q22.3



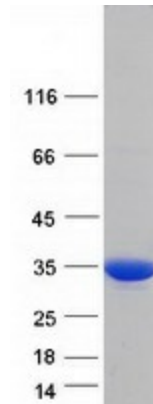
[View online »](#)

Summary:

This gene product belongs to the 14-3-3 family of proteins which mediate signal transduction by binding to phosphoserine-containing proteins. This highly conserved protein family is found in both plants and mammals, and this protein is 99% identical to the mouse, rat and sheep orthologs. The encoded protein interacts with IRS1 protein, suggesting a role in regulating insulin sensitivity. Several transcript variants that differ in the 5' UTR but that encode the same protein have been identified for this gene. [provided by RefSeq, Oct 2008]

Protein Pathways:

Cell cycle, Neurotrophin signaling pathway, Oocyte meiosis, Pathogenic Escherichia coli infection

Product images:

Coomassie blue staining of purified YWHAZ protein (Cat# [TP326999]). The protein was produced from HEK293T cells transfected with YWHAZ cDNA clone (Cat# [RC226999]) using MegaTran 2.0 (Cat# [TT210002]).