

## Product datasheet for PH326937

### TARM1 (NM\_001135686) Human Mass Spec Standard

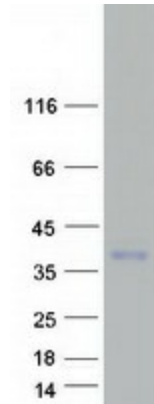
#### Product data:

Product Type:	Mass Spec Standards
Description:	TARM1 MS Standard C13 and N15-labeled recombinant protein (NP_001129158)
Species:	Human
Expression Host:	HEK293
Expression cDNA Clone or AA Sequence:	RC226937
Predicted MW:	29.3 kDa
Protein Sequence:	<p>&gt;RC226937 representing NM_001135686</p> <p>Red=Cloning site Green=Tags(s)</p> <p>MIPKLLSLLCFRLCVGQDTRGDGSLPKPSLSAWPSSVVPANSNVTLRCWTPARGVSFVLRKGGIILESP            KPLDSTEGAAEFHLNNLKVRNAGEYTC EYRKASPHILSQRSVLLLLVTGHL SKPFLRTYQRGTVTAGG            RYTLQCQKRDQLFVPIMFALLKAGTPSPIQLQSPAGKEIDFSLVDVTAGDAGNYSCMYQT KSPFWASEP            SDQLEILVTVPPGTTSSNYSLGNFVRLGLAAVIVVIMGAFLVEAWYSRNVSPGESEAFKPE</p> <p>TRTRPLEQKLISEEDLAANDILDYKDDDDKV</p>
Tag:	C-Myc/DDK
Purity:	> 80% as determined by SDS-PAGE and Coomassie blue staining
Concentration:	>0.05 µg/µL as determined by microplate BCA method
Labeling Method:	Labeled with [U- <sup>13</sup> C <sub>6</sub> , <sup>15</sup> N <sub>4</sub> ]-L-Arginine and [U- <sup>13</sup> C <sub>6</sub> , <sup>15</sup> N <sub>2</sub> ]-L-Lysine
Buffer:	25 mM Tris-HCl, 100 mM glycine, pH 7.3
Storage:	Store at -80°C. Avoid repeated freeze-thaw cycles.
Stability:	Stable for 3 months from receipt of products under proper storage and handling conditions.
RefSeq:	<a href="#">NP_001129158</a>
RefSeq ORF:	813
Synonyms:	OLT-2
Locus ID:	441864
UniProt ID:	<a href="#">B6A8C7</a>
Cytogenetics:	19q13.42


[View online »](#)

**Summary:**

May act as receptor (By similarity). Negatively regulates TCR-mediated CD4(+) T cell proliferation and activation, possibly by binding an unknown ligand on the T cell surface (PubMed:26311901). Enhances Toll-like receptor-mediated production of pro-inflammatory cytokines by macrophages and neutrophils (By similarity).[UniProtKB/Swiss-Prot Function]

**Product images:**


Coomassie blue staining of purified TARM1 protein (Cat# [TP326937]). The protein was produced from HEK293T cells transfected with TARM1 cDNA clone (Cat# [RC226937]) using MegaTran 2.0 (Cat# [TT210002]).