

## Product datasheet for PH326908

### SAE1 (NM\_001145713) Human Mass Spec Standard

#### Product data:

Product Type:	Mass Spec Standards
Description:	SAE1 MS Standard C13 and N15-labeled recombinant protein (NP_001139185)
Species:	Human
Expression Host:	HEK293
Expression cDNA Clone or AA Sequence:	RC226908
Predicted MW:	32.9 kDa
Protein Sequence:	>RC226908 representing NM_001145713 Red=Cloning site Green=Tags(s)  MVEKEEAGGGISEEEAAQYDRQIRLWGLEAQKRLRASRVLLVGLKGLGAEIAKNLILAGVKGLTMLDHEQ VTPEDPGAQFLIRTGSVGRNRAEASLERAQNLNPMVDVKVDTEIDIEKKPESFFTQFDAVCLTCCSRDVIV KVDQICHKNSIKFFTGDFVGYHGYTFANLGEHEFVEEKTKVAKVSQGVEDGPDTKRAKLDSSETTMVKKK VVFPCVKEALEVDWSSEKAKAALKRTTSDYFLLQGVPVSAGPSSQQLLLLLRWHEGEWDCGVPWPQVNSRFG SPRDANCSMPTCIPCPLPS  TRTRPLEQKLISEEDLAANDILDYKDDDDKV
Tag:	C-Myc/DDK
Purity:	> 80% as determined by SDS-PAGE and Coomassie blue staining
Concentration:	>0.05 µg/µL as determined by microplate BCA method
Labeling Method:	Labeled with [U- <sup>13</sup> C <sub>6</sub> , <sup>15</sup> N <sub>4</sub> ]-L-Arginine and [U- <sup>13</sup> C <sub>6</sub> , <sup>15</sup> N <sub>2</sub> ]-L-Lysine
Buffer:	25 mM Tris-HCl, 100 mM glycine, pH 7.3
Storage:	Store at -80°C. Avoid repeated freeze-thaw cycles.
Stability:	Stable for 3 months from receipt of products under proper storage and handling conditions.
RefSeq:	<a href="#">NP_001139185</a>
RefSeq ORF:	897
Synonyms:	AOS1; HSPC140; SUA1; UBLE1A
Locus ID:	10055
UniProt ID:	<a href="#">Q9UBE0</a>



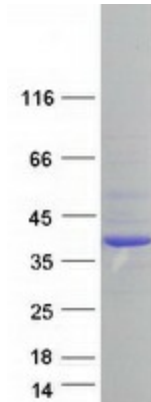
[View online »](#)

Cytogenetics: 19q13.32

**Summary:** Posttranslational modification of proteins by the addition of the small protein SUMO (see SUMO1; MIM 601912), or sumoylation, regulates protein structure and intracellular localization. SAE1 and UBA2 (MIM 613295) form a heterodimer that functions as a SUMO-activating enzyme for the sumoylation of proteins (Okuma et al., 1999 [PubMed 9920803]). [supplied by OMIM, Mar 2010]

**Protein Pathways:** Ubiquitin mediated proteolysis

**Product images:**



Coomassie blue staining of purified SAE1 protein (Cat# [TP326908]). The protein was produced from HEK293T cells transfected with SAE1 cDNA clone (Cat# [RC226908]) using MegaTran 2.0 (Cat# [TT210002]).