

Product datasheet for PH326857

EDC3 (NM_001142443) Human Mass Spec Standard

Product data:

Product Type:	Mass Spec Standards
Description:	EDC3 MS Standard C13 and N15-labeled recombinant protein (NP_001135915)
Species:	Human
Expression Host:	HEK293
Expression cDNA Clone or AA Sequence:	RC226857
Predicted MW:	56.1 kDa
Protein Sequence:	>RC226857 protein sequence Red=Cloning site Green=Tags(s)

MATDWLGSIVSINCGDSLGVYQGRVSAVDQVSQTISLTRPFHNGVKCLVPEVTFRAGDITELKILEIPGP
GDNQHFGDLHQTELGPSGAGCQVGINQNGTGKFKKPASSSSAPQNIIPKRTDVKSQDVAVSPQQQCSKS
YVDRHMESLSQSKSFRRRHNSWSSSRHPNQTTPKKSGLKNGQMKNDDECFGDDIEEIPDTHDFEGNL
ALFDKAAVFEEIDTYERRSGTRSRGIPNERPTRYRHDENILESEPIVYRRIIVPHNVSKEFCTDSGLVVP
SISYELHKKLLSVAEKHGLTLERRLEMTGVCASQMALTLGGPNRLNPKNVHQRPVALLCGPHVKGAAQG
ISCGRHLANHDVQVILFLPNFVKMLESITNELSLFSKTQGGQVSSSLKDLPTSPVDLVINCLDCPENVFLR
DQPWYKAAVAWANQNRAPVLSIDPPVHEVEQGIDAKWSLALGLPLPLGEHAGRIYLCDIGIPQQVFQEVG
INYHSPFGCKFVIPLHSA

TRTRPLEQKLI SEEDLAANDILDYKDDDDKV

Tag:	C-Myc/DDK
Purity:	> 80% as determined by SDS-PAGE and Coomassie blue staining
Concentration:	>0.05 µg/µL as determined by microplate BCA method
Labeling Method:	Labeled with [U- 13C6, 15N4]-L-Arginine and [U- 13C6, 15N2]-L-Lysine
Buffer:	25 mM Tris-HCl, 100 mM glycine, pH 7.3
Storage:	Store at -80°C. Avoid repeated freeze-thaw cycles.
Stability:	Stable for 3 months from receipt of products under proper storage and handling conditions.
RefSeq:	<u>NP_001135915</u>
RefSeq Size:	4086
RefSeq ORF:	1524



[View online »](#)

Synonyms: hYjeF_N2-15q23; LSM16; MRT50; YJDC; YJEFN2

Locus ID: 80153

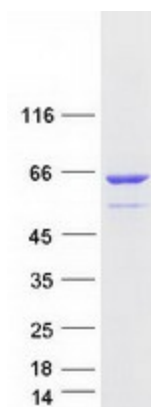
UniProt ID: [Q96F86](#)

Cytogenetics: 15q24.1

Summary: This gene encodes a protein that is important in mRNA degradation. The encoded protein is a component of a decapping complex that promotes efficient removal of the monomethylguanosine (m7G) cap from mRNAs, as part of the 5' to 3' mRNA decay pathway. Mutations in this gene have been identified in human patients with an autosomal recessive form of intellectual disability. [provided by RefSeq, May 2017]

Protein Pathways: RNA degradation

Product images:



Coomassie blue staining of purified EDC3 protein (Cat# [TP326857]). The protein was produced from HEK293T cells transfected with EDC3 cDNA clone (Cat# [RC226857]) using MegaTran 2.0 (Cat# [TT210002]).