

Product datasheet for PH326833

RNASEH2B (NM_001142279) Human Mass Spec Standard

Product data:

Product Type:	Mass Spec Standards
Description:	RNASEH2B MS Standard C13 and N15-labeled recombinant protein (NP_001135751)
Species:	Human
Expression Host:	HEK293
Expression cDNA Clone or AA Sequence:	RC226833
Predicted MW:	28.8 kDa
Protein Sequence:	>RC226833 representing NM_001142279 Red=Cloning site Green=Tags(s) MAAGVDCGDGVGARQHVFLVSEYLDASKMKMNGLMFVKLVNPCSGEGAIYLFNMCLQQLFEVKVFKEKH HSWFINQSVQSGLLHFATPVDPLFLLHLYLIKADKEGKFQPLDQVVVDNVFPNCILLKLPGLEKLLHH VTEEKGNPEIDNKKYYKYSKEKTLKWLEKKVNQTVAAALKTNVNVSSRVQSTAFFSGDQASTDKEEDYIR YAHGLISDYIPKELSDDL SKYLKLPESASLPNPPSKMAAQRQKR GK TRTRPLEQKLI SEEDLAANDILDYKDDDDKV
Tag:	C-Myc/DDK
Purity:	> 80% as determined by SDS-PAGE and Coomassie blue staining
Concentration:	>0.05 µg/µL as determined by microplate BCA method
Labeling Method:	Labeled with [U- ¹³ C ₆ , ¹⁵ N ₄]-L-Arginine and [U- ¹³ C ₆ , ¹⁵ N ₂]-L-Lysine
Buffer:	25 mM Tris-HCl, 100 mM glycine, pH 7.3
Storage:	Store at -80°C. Avoid repeated freeze-thaw cycles.
Stability:	Stable for 3 months from receipt of products under proper storage and handling conditions.
RefSeq:	NP_001135751
RefSeq ORF:	771
Synonyms:	AGS2; DLEU8
Locus ID:	79621
UniProt ID:	Q5TBB1
Cytogenetics:	13q14.3



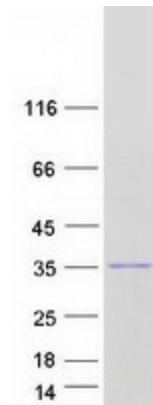
[View online »](#)

Summary:

RNase H2 is composed of a single catalytic subunit (A) and two non-catalytic subunits (B and C) and specifically degrades the RNA of RNA:DNA hybrids. The protein encoded by this gene is the non-catalytic B subunit of RNase H2, which is thought to play a role in DNA replication. Multiple transcript variants encoding different isoforms have been found for this gene. Defects in this gene are a cause of Aicardi-Goutieres syndrome type 2 (AGS2). [provided by RefSeq, Nov 2008]

Protein Pathways:

DNA replication

Product images:

Coomassie blue staining of purified RNASEH2B protein (Cat# [TP326833]). The protein was produced from HEK293T cells transfected with RNASEH2B cDNA clone (Cat# [RC226833]) using MegaTran 2.0 (Cat# [TT210002]).