

## Product datasheet for PH326825

### IKK gamma (IKBKG) (NM\_001145255) Human Mass Spec Standard

#### Product data:

Product Type:	Mass Spec Standards
Description:	IKBKG MS Standard C13 and N15-labeled recombinant protein (NP_001138727)
Species:	Human
Expression Host:	HEK293
Expression cDNA Clone or AA Sequence:	RC226825
Predicted MW:	36.8 kDa
Protein Sequence:	>RC226825 representing NM_001145255 <b>Red</b> =Cloning site <b>Green</b> =Tags(s)  MNRHLWKSQ LCEMVQPSGGPAADQDVLGEESPLGKPAMLHLPSEQGAPETLQRCLEENQELRDAIRQSNQ ILRERCEELLHFQASQREEKEFLMCKFQEARKLVERLGLEKLDLKRQKEQALREVEHLKRCQQQMAEDKA SVKAQVTSLLGELQESQSRLEAATKECQALEGRRKLAQLQVAYHQLFQEYDNHIKSSVVGSEKRAIYK ADFQAERQAREKLAEKKELLQEQLQREYSKLGKASCQESARIEDMRKRHVEVSQAPLPPAPAYLSSPL ALPSQRRSPPEEPPDFCCPKCQYQAPDMDTLQIHVMECIE  <b>TRTRPLEQKLI SEEDLAANDILDYKDDDDKV</b>
Tag:	C-Myc/DDK
Purity:	> 80% as determined by SDS-PAGE and Coomassie blue staining
Concentration:	>0.05 µg/µL as determined by microplate BCA method
Labeling Method:	Labeled with [U- <sup>13</sup> C <sub>6</sub> , <sup>15</sup> N <sub>4</sub> ]-L-Arginine and [U- <sup>13</sup> C <sub>6</sub> , <sup>15</sup> N <sub>2</sub> ]-L-Lysine
Buffer:	25 mM Tris-HCl, 100 mM glycine, pH 7.3
Storage:	Store at -80°C. Avoid repeated freeze-thaw cycles.
Stability:	Stable for 3 months from receipt of products under proper storage and handling conditions.
RefSeq:	<u><a href="#">NP_001138727</a></u>
RefSeq ORF:	960
Synonyms:	AMCBX1; EDAID1; FIP-3; FIP3; Fip3p; IKK-gamma; IKKAP1; IKKG; IMD33; IP; IP1; IP2; IPD2; NEMO; ZC2HC9
Locus ID:	8517



[View online »](#)

UniProt ID: [Q9Y6K9](#)

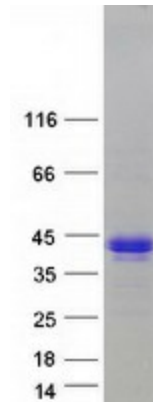
Cytogenetics: Xq28

**Summary:** This gene encodes the regulatory subunit of the inhibitor of kappaB kinase (IKK) complex, which activates NF-kappaB resulting in activation of genes involved in inflammation, immunity, cell survival, and other pathways. Mutations in this gene result in incontinentia pigmenti, hypohidrotic ectodermal dysplasia, and several other types of immunodeficiencies. A pseudogene highly similar to this locus is located in an adjacent region of the X chromosome. [provided by RefSeq, Mar 2016]

**Protein Families:** Druggable Genome, Transcription Factors

**Protein Pathways:** Acute myeloid leukemia, Adipocytokine signaling pathway, Apoptosis, B cell receptor signaling pathway, Chemokine signaling pathway, Chronic myeloid leukemia, Cytosolic DNA-sensing pathway, Epithelial cell signaling in Helicobacter pylori infection, MAPK signaling pathway, NOD-like receptor signaling pathway, Pancreatic cancer, Pathways in cancer, Primary immunodeficiency, Prostate cancer, RIG-I-like receptor signaling pathway, Small cell lung cancer, T cell receptor signaling pathway, Toll-like receptor signaling pathway

### Product images:



Coomassie blue staining of purified IKBKG protein (Cat# [TP326825]). The protein was produced from HEK293T cells transfected with IKBKG cDNA clone (Cat# [RC226825]) using MegaTran 2.0 (Cat# [TT210002]).