

Product datasheet for PH326813

ICA1 (NM_001136020) Human Mass Spec Standard

Product data:

Product Type:	Mass Spec Standards
Description:	ICA1 MS Standard C13 and N15-labeled recombinant protein (NP_001129492)
Species:	Human
Expression Host:	HEK293
Expression cDNA Clone or AA Sequence:	RC226813
Predicted MW:	54.5 kDa
Protein Sequence:	>RC226813 representing NM_001136020 Red=Cloning site Green=Tags(s)

MSGHKCYPWDLQDRYAQDKSVVNMQQKYWETKQAFIKATGKKEDEHVVASDADLDAKLELFHSIQRTCL
DLSKAIVLYQKRICFLSQEENELGKFLRSQGFQDKTRAGKMMQATGKALCFSSQQRLALRNPLCRFHQEV
ETFRHRAISDTWLTVNRMEQCRTEYRGALLWMKDVSQELDPDLYKQMEKFRKVQTVRLAKKNFDKLMKD
VCQKVDLLGASRCNLLSHMLATYQTTLLHFWEKTSHTMAAIHESFKGYQPYEFTTLKSLQDPMKKLVEKE
EKKKINQQESTDAAVQEPSQLISLEEENQRKESSFKTEDGKSILSALDKGSTHTACSGPIDELDMKSE
EGACLGPVAGTPEPEGADKDDLLLLSEIFNASSLEEGEFKEWAAVFGDGQVKEPVPTMALGEPDPAQT
GSGFLPSQLLDQNMKDLQASLQEPAKAASDLTAWFSLFADLDPLSNPDAVGKTDKEHELLNA

TRTRPLEQKLISEEDLAANDILDYKDDDDKV

Tag:	C-Myc/DDK
Purity:	> 80% as determined by SDS-PAGE and Coomassie blue staining
Concentration:	>0.05 µg/µL as determined by microplate BCA method
Labeling Method:	Labeled with [U- 13C6, 15N4]-L-Arginine and [U- 13C6, 15N2]-L-Lysine
Buffer:	25 mM Tris-HCl, 100 mM glycine, pH 7.3
Storage:	Store at -80°C. Avoid repeated freeze-thaw cycles.
Stability:	Stable for 3 months from receipt of products under proper storage and handling conditions.
RefSeq:	NP_001129492
RefSeq ORF:	1244
Synonyms:	ICA69; ICAp69
Locus ID:	3382



[View online »](#)

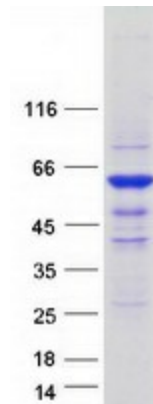
UniProt ID: [Q05084](#), [A0A024RA29](#)

Cytogenetics: 7p21.3

Summary: This gene encodes a protein with an arfaptin homology domain that is found both in the cytosol and as membrane-bound form on the Golgi complex and immature secretory granules. This protein is believed to be an autoantigen in insulin-dependent diabetes mellitus and primary Sjogren's syndrome. Several transcript variants encoding two different isoforms have been found for this gene. [provided by RefSeq, Feb 2013]

Protein Pathways: Type I diabetes mellitus

Product images:



Coomassie blue staining of purified ICA1 protein (Cat# [TP326813]). The protein was produced from HEK293T cells transfected with ICA1 cDNA clone (Cat# [RC226813]) using MegaTran 2.0 (Cat# [TT210002]).