

Product datasheet for PH326779

EB2 (MAPRE2) (NM_001143827) Human Mass Spec Standard

Product data:

Product Type:	Mass Spec Standards
Description:	MAPRE2 MS Standard C13 and N15-labeled recombinant protein (NP_001137299)
Species:	Human
Expression Host:	HEK293
Expression cDNA Clone or AA Sequence:	RC226779
Predicted MW:	35.6 kDa
Protein Sequence:	>RC226779 representing NM_001143827 Red=Cloning site Green=Tags(s) MKQNRDQKCPVSRNSSFQQPGRKPGCSSWGMVNVYSTSITQETMSRHDIIAWVNDIVSLNYTKVEQLC SGAAYCQFMDMLFPGCISLKKVKFQAKLEHEYIHNFKLLQASFKRMNVDKVIPVEKLVKGRFQDNLDFIQ WFKKFYDANYDGKEYDPVEARQQQDAIPPPDPGEQIFNLPKKS HHANSPTAGAAKSSPAAKPGSTPSRPS SAKRASSSGSASKSDKDLETQVIQLNEQVHSLKLALLEGVEKERDFYFGKLR EIELLCQEHGQENDDL VQR LMDILYASEEHGHTPEEAEQAHEQQPPQEEY TRTRPLEQKLI SEEDLAANDILDYKDDDDKV
Tag:	C-Myc/DDK
Purity:	> 80% as determined by SDS-PAGE and Coomassie blue staining
Concentration:	>0.05 µg/µL as determined by microplate BCA method
Labeling Method:	Labeled with [U- 13C6, 15N4]-L-Arginine and [U- 13C6, 15N2]-L-Lysine
Buffer:	25 mM Tris-HCl, 100 mM glycine, pH 7.3
Storage:	Store at -80°C. Avoid repeated freeze-thaw cycles.
Stability:	Stable for 3 months from receipt of products under proper storage and handling conditions.
RefSeq:	<u>NP_001137299</u>
RefSeq ORF:	945
Synonyms:	CSCSC2; EB1; EB2; RP1
Locus ID:	10982
UniProt ID:	<u>Q15555</u>



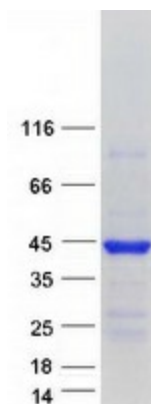
[View online »](#)

Cytogenetics: 18q12.1-q12.2

Summary: The protein encoded by this gene shares significant homology to the adenomatous polyposis coli (APC) protein-binding EB1 gene family. This protein is a microtubule-associated protein that is necessary for spindle symmetry during mitosis. It is thought to play a role in the tumorigenesis of colorectal cancers and the proliferative control of normal cells. Alternative splicing of this gene results in multiple transcript variants. [provided by RefSeq, Jan 2012]

Protein Families: Druggable Genome

Product images:



Coomassie blue staining of purified MAPRE2 protein (Cat# [TP326779]). The protein was produced from HEK293T cells transfected with MAPRE2 cDNA clone (Cat# [RC226779]) using MegaTran 2.0 (Cat# [TT210002]).