

Product datasheet for PH326770

Nkx2.6 (NKX2-6) (NM_001136271) Human Mass Spec Standard

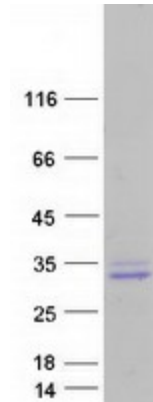
Product data:

Product Type:	Mass Spec Standards
Description:	NKX2 MS Standard C13 and N15-labeled recombinant protein (NP_001129743)
Species:	Human
Expression Host:	HEK293
Expression cDNA Clone or AA Sequence:	RC226770
Predicted MW:	23.1 kDa
Protein Sequence:	<p>>RC226770 representing NM_001136271</p> <p>Red=Cloning site Green=Tags(s)</p> <p>MDAERMGEPQPLNAASPLGGGTRVPERGVGNSGDSVRGGRSEQPKARQRRKPRVLF SQAQVLALERRFK QQRYLSAPEREHLASALQLTSTQVKIWFQNRKYCKRQRQDKSLELAGHPLTPRRVAVPVLVRDGPCLG PGPAPAFPSYSAAVSPYSCYGGYSGAPYGAGYGTCTYAGAPSGPAPHTPLASAGFGHGGQNATPQGHLA ATLQGVRAW</p> <p>TRTRPLEQKLISEEDLAANDILDYKDDDDKV</p>
Tag:	C-Myc/DDK
Purity:	> 80% as determined by SDS-PAGE and Coomassie blue staining
Concentration:	>0.05 µg/µL as determined by microplate BCA method
Labeling Method:	Labeled with [U- ¹³ C ₆ , ¹⁵ N ₄]-L-Arginine and [U- ¹³ C ₆ , ¹⁵ N ₂]-L-Lysine
Buffer:	25 mM Tris-HCl, 100 mM glycine, pH 7.3
Storage:	Store at -80°C. Avoid repeated freeze-thaw cycles.
Stability:	Stable for 3 months from receipt of products under proper storage and handling conditions.
RefSeq:	NP_001129743
RefSeq ORF:	657
Synonyms:	CSX2; CTHM; NKX2F; NKX4-2
Locus ID:	137814
UniProt ID:	A6NCS4
Cytogenetics:	8p21.2


[View online »](#)

Summary:

This gene encodes a homeobox-containing protein that belongs to the NK-2 homeobox family. This protein is a vertebrate homolog of *Drosophila* homeobox-containing protein called 'tinman', which has been shown to be essential for development of the heart-like dorsal vessel. In conjunction with related gene, NKX2-5, this gene may play a role in both pharyngeal and cardiac embryonic development. Mutations in this gene are associated with persistent truncus arteriosus.[provided by RefSeq, Aug 2011]

Product images:


Coomassie blue staining of purified NKX2-6 protein (Cat# [TP326770]). The protein was produced from HEK293T cells transfected with NKX2-6 cDNA clone (Cat# [RC226770]) using MegaTran 2.0 (Cat# [TT210002]).