

Product datasheet for PH326751

EFCAB2 (NM_001143943) Human Mass Spec Standard

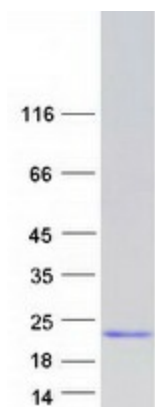
Product data:

Product Type:	Mass Spec Standards
Description:	EFCAB2 MS Standard C13 and N15-labeled recombinant protein (NP_001137415)
Species:	Human
Expression Host:	HEK293
Expression cDNA Clone or AA Sequence:	RC226751
Predicted MW:	15.3 kDa
Protein Sequence:	<p>>RC226751 representing NM_001143943</p> <p>Red=Cloning site Green=Tags(s)</p> <p>MADEKDREEIIIVAEFHKIKEAFEVFDHESNNTVDVREIGTIIRSLGCCPTEGELHDLIAEVEEEEPTGY IRFEKFLPVMTEILLERKYRPIPEDVLLRAFEVLDSAKRGFLTKDEL IKYMTEDGVSLRRPG</p> <p>TRTRPLEQKLISEEDLAANDILDYKDDDDKV</p>
Tag:	C-Myc/DDK
Purity:	> 80% as determined by SDS-PAGE and Coomassie blue staining
Concentration:	>0.05 µg/µL as determined by microplate BCA method
Labeling Method:	Labeled with [U- 13C6, 15N4]-L-Arginine and [U- 13C6, 15N2]-L-Lysine
Buffer:	25 mM Tris-HCl, 100 mM glycine, pH 7.3
Storage:	Store at -80°C. Avoid repeated freeze-thaw cycles.
Stability:	Stable for 3 months from receipt of products under proper storage and handling conditions.
RefSeq:	NP_001137415
RefSeq ORF:	399
Synonyms:	CFAP200; DRC8
Locus ID:	84288
UniProt ID:	Q5VUJ9
Cytogenetics:	1q44


[View online »](#)

Summary:

The gene encodes a protein that contains two EF-hand calcium-binding domains although its function has yet to be determined. Alternatively spliced transcripts have been observed.
[provided by RefSeq, Mar 2014]

Product images:


Coomassie blue staining of purified EFCAB2 protein (Cat# [TP326751]). The protein was produced from HEK293T cells transfected with EFCAB2 cDNA clone (Cat# [RC226751]) using MegaTran 2.0 (Cat# [TT210002]).