

Product datasheet for PH326732

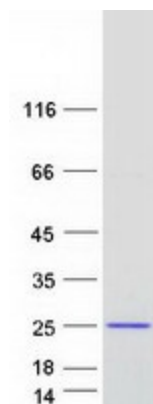
FLYWCH2 (NM_001142499) Human Mass Spec Standard

Product data:

Product Type:	Mass Spec Standards
Description:	FLYWCH2 MS Standard C13 and N15-labeled recombinant protein (NP_001135971)
Species:	Human
Expression Host:	HEK293
Expression cDNA Clone or AA Sequence:	RC226732
Predicted MW:	14.6 kDa
Protein Sequence:	>RC226732 protein sequence Red =Cloning site Green =Tags(s) MPLPEPSEQEGESVKASQEPSPKPGTEVIPAAPRKPRKFSKLVLLTASKDSTKVAGAKRKGVHCVMSLGV PGPATLAKALLQTHPEAQRAIEAAPQEPEQKRSRQDPGTDRTEDSGLAAGPPEAAGENFAPCSVAPGKSL TR TRPLE QKL ISEEDLAANDILDYKDDDDK V
Tag:	C-Myc/DDK
Purity:	> 80% as determined by SDS-PAGE and Coomassie blue staining
Concentration:	>0.05 µg/µL as determined by microplate BCA method
Labeling Method:	Labeled with [U- 13C6, 15N4]-L-Arginine and [U- 13C6, 15N2]-L-Lysine
Buffer:	25 mM Tris-HCl, 100 mM glycine, pH 7.3
Storage:	Store at -80°C. Avoid repeated freeze-thaw cycles.
Stability:	Stable for 3 months from receipt of products under proper storage and handling conditions.
RefSeq:	NP_001135971
RefSeq Size:	950
RefSeq ORF:	420
Locus ID:	114984
UniProt ID:	Q96CP2
Cytogenetics:	16p13.3



[View online »](#)

Product images:

Coomassie blue staining of purified FLYWCH2 protein (Cat# [TP326732]). The protein was produced from HEK293T cells transfected with FLYWCH2 cDNA clone (Cat# [RC226732]) using MegaTran 2.0 (Cat# [TT210002]).