

Product datasheet for PH326653

TSH Receptor (TSHR) (NM_001142626) Human Mass Spec Standard

Product data:

Product Type:	Mass Spec Standards
Description:	TSHR MS Standard C13 and N15-labeled recombinant protein (NP_001136098)
Species:	Human
Expression Host:	HEK293
Expression cDNA Clone or AA Sequence:	RC226653
Predicted MW:	30.8 kDa
Protein Sequence:	>RC226653 representing NM_001142626 Red=Cloning site Green=Tags(s) MRPADLLQLVLLLDLPRDLGGMGCSPPCECHQEEDFRVTCKDIQRIPSLPPSTQTLKLIETHLRRTIPSH AFSNLPNISRIYVSDIVTLQQLESFSFYNLKSVTHIEIRNTRNLTYIDPDALKELPLLKFLGIFNTGLKM FPDLTKVYSTDIFFILEITDNPYMTSIPVNAFQGLCNETLTLKLYNNGFTSVQGYAFNGTKLDAVYLNKN KYLTVIDKDAFGGVYSGPSLLVENVAVSGKGFCKSLFSWLRYRPLGRKSLSFETQKAPRSSMPS TRTRPLEQKLI SEEDLAANDILDYKDDDDKV
Tag:	C-Myc/DDK
Purity:	> 80% as determined by SDS-PAGE and Coomassie blue staining
Concentration:	>0.05 µg/µL as determined by microplate BCA method
Labeling Method:	Labeled with [U- ¹³ C ₆ , ¹⁵ N ₄]-L-Arginine and [U- ¹³ C ₆ , ¹⁵ N ₂]-L-Lysine
Buffer:	25 mM Tris-HCl, 100 mM glycine, pH 7.3
Storage:	Store at -80°C. Avoid repeated freeze-thaw cycles.
Stability:	Stable for 3 months from receipt of products under proper storage and handling conditions.
RefSeq:	NP_001136098
RefSeq ORF:	822
Synonyms:	CHNG1; hTSHR-I; LGR3
Locus ID:	7253
UniProt ID:	P16473
Cytogenetics:	14q31.1



[View online »](#)

Summary:

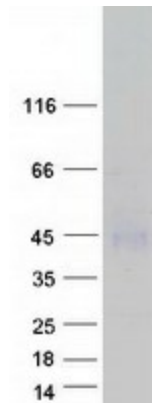
The protein encoded by this gene is a membrane protein and a major controller of thyroid cell metabolism. The encoded protein is a receptor for thyrothopin and thyrostimulin, and its activity is mediated by adenylate cyclase. Defects in this gene are a cause of several types of hyperthyroidism. Three transcript variants encoding different isoforms have been found for this gene. [provided by RefSeq, Dec 2008]

Protein Families:

Druggable Genome, GPCR, Transmembrane

Protein Pathways:

Autoimmune thyroid disease, Neuroactive ligand-receptor interaction

Product images:

Coomassie blue staining of purified TSHR protein (Cat# [TP326653]). The protein was produced from HEK293T cells transfected with TSHR cDNA clone (Cat# [RC226653]) using MegaTran 2.0 (Cat# [TT210002]).