

## Product datasheet for PH326633

### BAP31 (BCAP31) (NM\_001139441) Human Mass Spec Standard

#### Product data:

Product Type:	Mass Spec Standards
Description:	BCAP31 MS Standard C13 and N15-labeled recombinant protein (NP_001132913)
Species:	Human
Expression Host:	HEK293
Expression cDNA Clone or AA Sequence:	RC226633
Predicted MW:	28 kDa
Protein Sequence:	>RC226633 protein sequence Red=Cloning site Green=Tags(s)  MSLQWTAVATFLYAEV FVLLLCIPFISP KRWQKIFKSRLVELLVSYGNTFFVVLIVILVLLVIDAVREI REYDDVTEKVN LQNNPGAMEHFHMKLFRAQRNLYIAGF SLLL SFLLRRLVTLISQQATLLASNEAFKKQA ESASEAAKKYMEENDQLKKGAAVDGGKLDVGN AEVKLEENRSLKADLQKLKDELASTKQKLEKAENQVL AMRKQSEGLTKEYDRLL EEHAKLQAAVDGPM DKKEE  TRTRPLEQKLI SEEDLAANDILDYKDDDDKV
Tag:	C-Myc/DDK
Purity:	> 80% as determined by SDS-PAGE and Coomassie blue staining
Concentration:	>0.05 µg/µL as determined by microplate BCA method
Labeling Method:	Labeled with [U- <sup>13</sup> C <sub>6</sub> , <sup>15</sup> N <sub>4</sub> ]-L-Arginine and [U- <sup>13</sup> C <sub>6</sub> , <sup>15</sup> N <sub>2</sub> ]-L-Lysine
Buffer:	25 mM Tris-HCl, 100 mM glycine, pH 7.3
Storage:	Store at -80°C. Avoid repeated freeze-thaw cycles.
Stability:	Stable for 3 months from receipt of products under proper storage and handling conditions.
RefSeq:	<a href="#">NP_001132913</a>
RefSeq Size:	1346
RefSeq ORF:	738
Synonyms:	6C6-AG; BAP31; CDM; DDCH; DXS1357E
Locus ID:	10134
UniProt ID:	<a href="#">P51572</a>



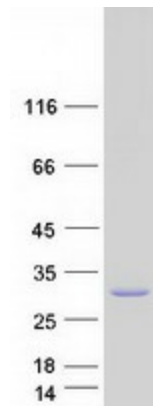
[View online »](#)

**Cytogenetics:** Xq28

**Summary:** This gene encodes a member of the B-cell receptor associated protein 31 superfamily. The encoded protein is a multi-pass transmembrane protein of the endoplasmic reticulum that is involved in the anterograde transport of membrane proteins from the endoplasmic reticulum to the Golgi and in caspase 8-mediated apoptosis. Microdeletions in this gene are associated with contiguous ABCD1/DXS1375E deletion syndrome (CADD5), a neonatal disorder. Alternative splicing of this gene results in multiple transcript variants. Two related pseudogenes have been identified on chromosome 16. [provided by RefSeq, Jan 2012]

**Protein Families:** Druggable Genome, Transmembrane

### Product images:



Coomassie blue staining of purified BCAP31 protein (Cat# [TP326633]). The protein was produced from HEK293T cells transfected with BCAP31 cDNA clone (Cat# [RC226633]) using MegaTran 2.0 (Cat# [TT210002]).