

Product datasheet for PH326620

SETDB1 (NM_001145415) Human Mass Spec Standard

Product data:

Product Type:	Mass Spec Standards
Description:	SETDB1 MS Standard C13 and N15-labeled recombinant protein (NP_001138887)
Species:	Human
Expression Host:	HEK293
Expression cDNA Clone or AA Sequence:	RC226620
Predicted MW:	143 kDa
Protein Sequence:	>RC226620 representing NM_001145415 Red=Cloning site Green=Tags(s)

MSSLPGCIGLDAATATVESEEIAELQQAVVEELGISMEELRHFIDEELEKMDCVQQRKKQLAELETWVIQ
KESEVAHVVDQLFDDASRAVTNCESLVKDFYSKLGQYRDSSEDESSRPTEIIEIPDEDDVLSIDSGDA
GSRTPKDQKLREAMAALRKSAQDVQKFMADVNNKSSSQDLHGKGLSQMSGELSKDGDLLIVSMRILGKKRT
KTWHKGLTIAIQTVGPQKYYKVKFDNKGKSLLSGNHIAVDYHPPADKLYVGSRVVAKYKDGNDQVWLYAGI
VAETPNVKNKLRFLIFFDDGYASYVTQSELYPICRPLKKTWEDIEDISCRDFIEEYVTAYPNRPMVLLKS
GQLIKTEWEGTWWKSRVEEVDGSLVRILFLDDKRCEWIYRGSTRLEPMFSMKTSSASALEKKQGQLRTRP
NMGAVRSKGPVVQYTQDLTGTGTQFKPVEPPQPTAPPAPPFPAPPLSPQAGSDLESQLAQSRKQVAKK
STSFRRPGSVGSGHSSPTSPALSENVSGGKPGINQTYRSPLGSTASAPAPSALPAPPAPPVHGMLEPAPA
EPSYRAPMEKLFYLPHVCSYTCLSRVPRMRNEQYRGKNPLLVPALLYDFRRMTARRRVNRKMGFHVYKTP
CGLCLRTMQEIERYL FETGCDFLFLEMFCCLDPYVLDVDRKFQPYKPFYIILDITYKEDVPLSCVNEIDTT
PPPQVAVYSKERIPGKGVFINTGPEFLVGCDCCKDGRDCKSKCACHQLTIQATACTPGGQINPNSGYQYKRL
EECLPTGVYECNKRCCKDPNMCTNRLVQHGLQVRLQLFKTQNKGWGIRCLDDIAKGSFVCIYAGKILTDD
FADKEGLEMGDEYFANLDHIESVENFKEGYESDAPCSSDSSGVLDKQEDGNSGTEDPEESNDSSDDNF
CKDEDFSTSSVWRSYATRQTRGQKENGLETTSKDSHPDLGPPHIPVPPSIPVGGCNPSSSEETPKNK
VASWLSVNSVSEGGFADSDSHSSFKTNEGGEGRAGGSRMEAESTSGLGIKDEGDIKQAKKEDTDDRNK
MSVVTSSRNRYGNPSPVKPEGLRRPPSKTSMHQSRRLMASAQNPDVLTLSSTSEGESGTSRKPTA
GQTSATAVDSDDIQTISSGSEGGDFEDKKNMTGPMKRQVAVKSTRGFALKSTHGIKSTNMASVDKGES
APVRKNTRQFYDGEESCYIIDAKLEGNLGRYLNHSCSPNLFVQNVFVDTHDLRFPWVAFFASKRIRAGTE
LTWDYNYEVGSVEGKELLCCCGAIECRGRL

TRTRPLEQKLISEEDLAANDILDYKDDDDKV

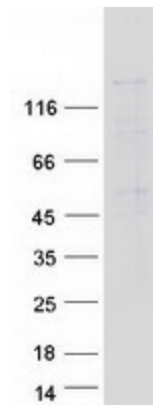
Tag:	C-Myc/DDK
Purity:	> 80% as determined by SDS-PAGE and Coomassie blue staining
Concentration:	>0.05 µg/µL as determined by microplate BCA method



[View online »](#)

Labeling Method:	Labeled with [U- ¹³ C ₆ , ¹⁵ N ₄]-L-Arginine and [U- ¹³ C ₆ , ¹⁵ N ₂]-L-Lysine
Buffer:	25 mM Tris-HCl, 100 mM glycine, pH 7.3
Storage:	Store at -80°C. Avoid repeated freeze-thaw cycles.
Stability:	Stable for 3 months from receipt of products under proper storage and handling conditions.
RefSeq:	NP_001138887
RefSeq ORF:	3873
Synonyms:	ESET; H3-K9-HMTase4; KG1T; KMT1E; TDRD21
Locus ID:	9869
UniProt ID:	Q15047
Cytogenetics:	1q21.3
Summary:	This gene encodes a histone methyltransferase which regulates histone methylation, gene silencing, and transcriptional repression. This gene has been identified as a target for treatment in Huntington Disease, given that gene silencing and transcription dysfunction likely play a role in the disease pathogenesis. Alternatively spliced transcript variants of this gene have been described.[provided by RefSeq, Jun 2011]
Protein Families:	Druggable Genome
Protein Pathways:	Lysine degradation

Product images:



Coomassie blue staining of purified SETDB1 protein (Cat# [TP326620]). The protein was produced from HEK293T cells transfected with SETDB1 cDNA clone (Cat# [RC226620]) using MegaTran 2.0 (Cat# [TT210002]).