

Product datasheet for PH326577

SAR1 (SAR1A) (NM_001142648) Human Mass Spec Standard

Product data:

Product Type:	Mass Spec Standards
Description:	SAR1A MS Standard C13 and N15-labeled recombinant protein (NP_001136120)
Species:	Human
Expression Host:	HEK293
Expression cDNA Clone or AA Sequence:	RC226577
Predicted MW:	22.4 kDa
Protein Sequence:	>RC226577 protein sequence Red=Cloning site Green=Tags(s) MSFIFEWIYNGFSSVLQFLGLYKKSGLVFLGLDNAGKTTLLHMLKDDRLGQHVPTLHPTSEELTIAGMT FTTFDLGGHEQARRVWKNYLPAINGIVFLVDCADHSRLVESKVELNALMTDETISNVPILILGNKIDRTD AISEEKLREIFGLYGQTTGKGNVTLKELNARPMVEVFMCSVLKRQYGEGFRWLSQYID TRTRPLEQKLISEEDLAANDILDYKDDDDKV
Tag:	C-Myc/DDK
Purity:	> 80% as determined by SDS-PAGE and Coomassie blue staining
Concentration:	>0.05 µg/µL as determined by microplate BCA method
Labeling Method:	Labeled with [U- ¹³ C ₆ , ¹⁵ N ₄]-L-Arginine and [U- ¹³ C ₆ , ¹⁵ N ₂]-L-Lysine
Buffer:	25 mM Tris-HCl, 100 mM glycine, pH 7.3
Storage:	Store at -80°C. Avoid repeated freeze-thaw cycles.
Stability:	Stable for 3 months from receipt of products under proper storage and handling conditions.
RefSeq:	NP_001136120
RefSeq Size:	3088
RefSeq ORF:	594
Synonyms:	masra2; SAR1; Sara; SARA1
Locus ID:	56681
UniProt ID:	Q9NR31 , Q5SQT9

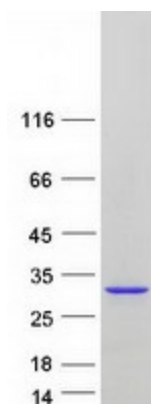


[View online »](#)

Cytogenetics: 10q22.1

Summary: Involved in transport from the endoplasmic reticulum to the Golgi apparatus (By similarity). Required to maintain SEC16A localization at discrete locations on the ER membrane perhaps by preventing its dissociation. SAR1A-GTP-dependent assembly of SEC16A on the ER membrane forms an organized scaffold defining endoplasmic reticulum exit sites (ERES). [UniProtKB/Swiss-Prot Function]

Product images:



Coomassie blue staining of purified SAR1A protein (Cat# [TP326577]). The protein was produced from HEK293T cells transfected with SAR1A cDNA clone (Cat# [RC226577]) using MegaTran 2.0 (Cat# [TT210002]).