

Product datasheet for PH326570

TTLL11 (NM_001139442) Human Mass Spec Standard

Product data:

Product Type:	Mass Spec Standards
Description:	TTLL11 MS Standard C13 and N15-labeled recombinant protein (NP_001132914)
Species:	Human
Expression Host:	HEK293
Expression cDNA Clone or AA Sequence:	RC226570
Predicted MW:	87.4 kDa
Protein Sequence:	>RC226570 representing NM_001139442 Red=Cloning site Green=Tags(s)

MAAAASVTGRVTWAASPMRSLGLGRRSLPGPRLDAVTAAVNPSLSDHGNGLRGTRGSGCSGGSLVADW
GGGAAAAAVALALAPALSTMRRGSSELAARWEAEAVAAKAAKAAEATAETVAEQVRVDAGAAGE
PECKAGEEQPKVLAPAPAQPSAAEEGNTQVLQRPPPTLPPSKPKPVQGLCPHGKPRDKGRSCKRSSGHGS
GENGSQRPVTVDSKARTSLDALKISIRQLKWKKEFPGRRLPCDIYWHGVSFHDNDIFSGQVNFKFGMTE
MVRKITLSRAVRTMQNLFPEEYNFYPRSWILPDEFQLFVAQVQMVKDDDDPSWKPTFIVKPDGGCQGDGIY
LIKDPDIRLAGTLQSRPAVVQYICKPLLIDKLFDIRLVLLKSLDPLEIYIAKDGLSRFCTEPYQEP
TPKNLHRIFMHLTNYSLNIHSGNFIHSDSASTGSKRTFSSILCRLSSKGVDIKKVWSDIISVVIKTVIAL
TPELKVFYQSDIPTGRPGPTCFQILGFDILLMKNLKPILLEVNANPSMRIEHEHELSPGVFENVPSLVDE
EVKVAVIRDTLRMDPLKKKRENSQQLKPFAGKEDALDGELTSAPDCNANPEAHLPSICLKQVFPKYA
KQFNYLRLVDRMANLFIKFLGKGTMKLGPTGFRFTFIRSKLSSSSLMAAVDILYIDITRRWNSMTLDQ
RDSGMCLQAFVEAFFFLAQRKFKMLPLHEQVASLIDLCEYHLSLLDEKRLVCGRGVPSGGRRPPHGRPPQE
PSPSAQPAGDNPPPTSCANKLSHPHRTLS

SGPTRRRLEQKLISEEDLAANDILDYKDDDDKV

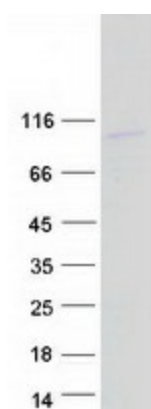
Tag:	C-Myc/DDK
Purity:	> 80% as determined by SDS-PAGE and Coomassie blue staining
Concentration:	>0.05 µg/µL as determined by microplate BCA method
Labeling Method:	Labeled with [U- ¹³ C ₆ , ¹⁵ N ₄]-L-Arginine and [U- ¹³ C ₆ , ¹⁵ N ₂]-L-Lysine
Buffer:	25 mM Tris-HCl, 100 mM glycine, pH 7.3
Storage:	Store at -80°C. Avoid repeated freeze-thaw cycles.
Stability:	Stable for 3 months from receipt of products under proper storage and handling conditions.
RefSeq:	NP_001132914



[View online »](#)

RefSeq ORF:	2400
Synonyms:	bA244O19.1; C9orf20
Locus ID:	158135
UniProt ID:	Q8NHH1 , Q6ZUZ3
Cytogenetics:	9q33.2
Summary:	Polyglutamase which preferentially modifies alpha-tubulin. Involved in the side-chain elongation step of the polyglutamylation reaction rather than in the initiation step (By similarity). Required for CCSAP localization to both spindle and cilia microtubules (PubMed:22493317). Generates long side-chains (By similarity).[UniProtKB/Swiss-Prot Function]

Product images:



Coomassie blue staining of purified TTLL11 protein (Cat# [TP326570]). The protein was produced from HEK293T cells transfected with TTLL11 cDNA clone (Cat# [RC226570]) using MegaTran 2.0 (Cat# [TT210002]).