

## Product datasheet for PH326540

### SEC14L1 (NM\_001143999) Human Mass Spec Standard

#### Product data:

Product Type:	Mass Spec Standards
Description:	SEC14L1 MS Standard C13 and N15-labeled recombinant protein (NP_001137471)
Species:	Human
Expression Host:	HEK293
Expression cDNA Clone or AA Sequence:	RC226540
Predicted MW:	81.2 kDa
Protein Sequence:	>RC226540 protein sequence <span style="color: red;">Red</span> =Cloning site <span style="color: green;">Green</span> =Tags(s)

MVQKYQSPVRVYKYPFELIMAAYERRFPTCPLIPMFVGS DTVNEFKSEDGAIHVIERRCKLDVDAPRLK  
 KIAGVDYVYFVQKNSLNSRRTLHIEAYNETFSNRVIINEHCCTVHPENEDWTCFEQSASLDIKSFFGF  
 ESTVEKIAMKQYTSNIKKGKEIIEYYLRQLEEGITFVPRWSPSITPSSETSSSSSKQAASMAVVIPE  
 AALKEGLSGDALSSSAPEPVVGTDDKLDADYIKRYLGDLTPLQESCLIRLRQWLQETHKGKIPKDEHI  
 LRFLRARDFNIDKAREIMCQSLTWKQHQVDYILETWTPPQVLQDYYAGGWHHDKDGRPLYVLRGQMD  
 TKGLVRALGEEALLRYVLSINEEGLRCEENTKVFGRPISSWTCLVDLEGLNMRHLWRPGVKALLRIIEV  
 VEANYPETLGRLLILRAPRVFPVLWTLVSPFIDNTRRKFLIYAGNDYQGPGLLDYIDKEIIPDFLSGE  
 CMCEVPEGGLVPKSLYRTAELENE DLKLTETIYQSASVFKGAPHEILIQIVDASSVITWDFDVCKGDI  
 VFNIYHSKRSPQPPKDSLGAHSITSPGGNNVQLIDKVVQLGRDYSMVESPLICKEGESVQGSHVTRWPG  
 FYILQWKFHSMPCAASSLPRVDDVLASLQVSSHCKVMYYTEVIGSEDFRGSMTSLESSHSGFSQLSAA  
 TTSSSQSHSSSMISR

TRTRPLEQKLI SEEDLAANDILDYKDDDDKV

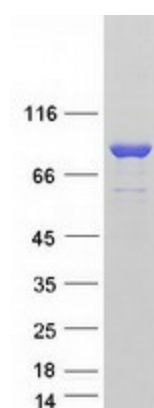
Tag:	C-Myc/DDK
Purity:	> 80% as determined by SDS-PAGE and Coomassie blue staining
Concentration:	>0.05 µg/µL as determined by microplate BCA method
Labeling Method:	Labeled with [U- <sup>13</sup> C <sub>6</sub> , <sup>15</sup> N <sub>4</sub> ]-L-Arginine and [U- <sup>13</sup> C <sub>6</sub> , <sup>15</sup> N <sub>2</sub> ]-L-Lysine
Buffer:	25 mM Tris-HCl, 100 mM glycine, pH 7.3
Storage:	Store at -80°C. Avoid repeated freeze-thaw cycles.
Stability:	Stable for 3 months from receipt of products under proper storage and handling conditions.
RefSeq:	<u><a href="#">NP_001137471</a></u>


[View online »](#)

RefSeq Size:	5542
RefSeq ORF:	2145
Synonyms:	PRELID4A; SEC14L
Locus ID:	6397
UniProt ID:	<a href="#">Q92503</a> , <a href="#">A0A024R8V1</a> , <a href="#">Q59HE8</a>
Cytogenetics:	17q25.2-q25.3

**Summary:** The protein encoded by this gene belongs to the SEC14 cytosolic factor family. It has similarity to yeast SEC14 and to Japanese flying squid RALBP which suggests a possible role of the gene product in an intracellular transport system. Multiple alternatively spliced transcript variants have been found for this gene; some variants represent read-through transcripts that include exons from the upstream gene C17orf86. [provided by RefSeq, Feb 2011]

### Product images:



Coomassie blue staining of purified SEC14L1 protein (Cat# [TP326540]). The protein was produced from HEK293T cells transfected with SEC14L1 cDNA clone (Cat# [RC226540]) using MegaTran 2.0 (Cat# [TT210002]).