

## Product datasheet for PH326527

### ABH2 (ALKBH2) (NM\_001145375) Human Mass Spec Standard

#### Product data:

Product Type:	Mass Spec Standards
Description:	ALKBH2 MS Standard C13 and N15-labeled recombinant protein (NP_001138847)
Species:	Human
Expression Host:	HEK293
Expression cDNA Clone or AA Sequence:	RC226527
Predicted MW:	29.3 kDa
Protein Sequence:	>RC226527 protein sequence Red=Cloning site Green=Tags(s)
	MDRFLVKGAQGGLLRKQEEQEPTGEEPVLGGDKESTRKRPRREAPGNGGHSAGPSWRHIRAEGLDCSYT VLFGKAEADEIFQELEKEVEYFTGALARVQVFGKWHSVPRKQATYGDAGLTYTFSGLTLSPKPWIPVLER IRDHVSGVTGQTFNFVLINRYKDGCDHIGEHRDDERELAPGSPIASVSFGACRDFVFRHKDSRGKSPSRR VAVVRLPLAHGSLMMNHPTNTHWYHSLPVRKKVLAPRVNLTFRKILLTKK
	TRTRPLEQKLI SEEDLAANDILDYKDDDDKV
Tag:	C-Myc/DDK
Purity:	> 80% as determined by SDS-PAGE and Coomassie blue staining
Concentration:	>0.05 µg/µL as determined by microplate BCA method
Labeling Method:	Labeled with [U- <sup>13</sup> C <sub>6</sub> , <sup>15</sup> N <sub>4</sub> ]-L-Arginine and [U- <sup>13</sup> C <sub>6</sub> , <sup>15</sup> N <sub>2</sub> ]-L-Lysine
Buffer:	25 mM Tris-HCl, 100 mM glycine, pH 7.3
Storage:	Store at -80°C. Avoid repeated freeze-thaw cycles.
Stability:	Stable for 3 months from receipt of products under proper storage and handling conditions.
RefSeq:	<a href="#">NP_001138847</a>
RefSeq Size:	953
RefSeq ORF:	783
Synonyms:	ABH2
Locus ID:	121642
UniProt ID:	<a href="#">Q6NS38</a>



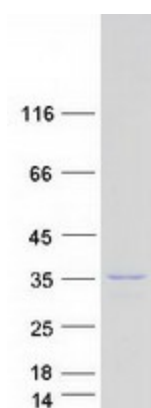
[View online »](#)

Cytogenetics: 12q24.11

**Summary:** The Escherichia coli AlkB protein protects against the cytotoxicity of methylating agents by repair of the specific DNA lesions generated in single-stranded DNA. ALKBH2 and ALKBH3 (MIM 610603) are E. coli AlkB homologs that catalyze the removal of 1-methyladenine and 3-methylcytosine (Duncan et al., 2002 [PubMed 12486230]).[supplied by OMIM, Mar 2008]

Protein Families: Druggable Genome

### Product images:



Coomassie blue staining of purified ALKBH2 protein (Cat# [TP326527]). The protein was produced from HEK293T cells transfected with ALKBH2 cDNA clone (Cat# [RC226527]) using MegaTran 2.0 (Cat# [TT210002]).