

## Product datasheet for **PH326485**

### Alpha Fodrin (SPTAN1) (NM\_001130438) Human Mass Spec Standard

#### Product data:

Product Type:	Mass Spec Standards
Description:	SPTAN1 MS Standard C13 and N15-labeled recombinant protein (NP_001123910)
Species:	Human
Expression Host:	HEK293
Expression cDNA Clone or AA Sequence:	RC226485
Predicted MW:	285.5 kDa



[View online »](#)

**Protein Sequence:** >RC226485 representing NM\_001130438  
 Red=Cloning site Green=Tags(s)

MDPSGVKVLETAEDIQERRQVLDRYHRFKELSTLRRQKLEDSYRFQFFQRDAEELEKWIQEKLQIASDE  
 NYKDPTNLQGLQKHQAFEAEVQANSQAIVKLDETNLMISEGHFASETIRTRLMELHRQWELLLEKMR  
 KGIKLLQAQKL VQYLRECEDVMDWINDKEAIVTSEELGQDLEHVEVLQKKFEEFQTDMAAHEERVNEV  
 NQ FAAKLIQEHPPEELIKTKQDEVNAAWQRLKGLALQRQKLFGAEEVQRFNRDVEDETISWIKEKEQL  
 MAS DDFGRDLASVQALLRKHEGLERDLAALEDKVKALCAEADRLQQSHPLSATQIQVKREELITNWEQIR  
 TLA AERHARLNDYRFLQRFADFRDLTSWVTEMKALINADELASDVAGAEALLDRHQEHKGEIDAHE  
 DSFKSA DESGQALLAAGHYASDEVREKLTVLSEERAALLELWELRRQYEQCMDLQLFYRDEQV  
 DNMWSKQEAFL LNEDELGSLDSVEALLKKHEDFEKLSAQEEKITALDEFATKLIQNNHYAMEDV  
 ATRRDALLSRRNALHE RAMRRRAQLADSFHLQQFFRDSDELKSWVNEKMTATDEAYKDP  
 SNLQGVQKHQAFEAELSANQSRIDA LEKAGQKLDIVNHYAKDEVAARMNEVISLWKKLLEATE  
 LKGIKLRANQQQFNRRNVEDIELWLVEVEGH LASDDYGGDLTNVQNLQKKHALLEADVA  
 AHQDRIDGITIQARQFQDAGHFDAENIKKKQEALVARYEALK EPMVARKQLADSLRLQQL  
 FRDVEDEETWIREKEPIAASNTRGKDLIGVQNLKKHQALQAEIAGHEPRI KAVTQKGNAM  
 VEEGHFAEDVKAKLHELNQKWEALKAKASQRRQDLEDSLQAQQYFADANEAESW  
 MREKE PTVGSTDYGKDEDSAEALLKKHEALMSDL SAYGSSIQALREQAQSCRQQVAPT  
 DDETGKELVLALYDYQE KSPREVTMKKGDILTLNSTNKDWWKVEVNDRQGFVPAAYV  
 KKLDPAQSAARENLLLEEQGSIALRQEQID NQTRITKEAGSVSLRMKQVEELYHSLLE  
 LGEKRGKMLEKSCCKFMLFREANELQQWINEKEAAL TSEEVG ADLEQVEVLQKKFDDFQ  
 KDLKANESRLKDKINKVAEDLESEGLMAEEVQAVQQQEVYGMMPREDTDSKTAS  
 PWKSARLMVHTVATFNSIKELNERWRSLQQLAEERSQLLGSAAHEVQRFHRDADETK  
 EWIEEKQALNTDN YGHDLASVQALQRKHEGFERDLAALGDKVNSLGETAERLIQSHPE  
 SAEDLQEKCTELNQAWSSLGKRADQ RKAKLGDSDHLQRFLSDFRDLMSWINGIRGL  
 VSSDELAKDVTGAEALLERHQEHRTEIDARAGTFQAFEQ FGQQLLAHGHYASPEIKQK  
 LDILDQERADLEKAWVQRRMMLDQCLELQLFHRDCEQAENWMAAREAF LNT  
 EDKGDLSDSVEALIKKHEDFDKAINVQEEKIAALQAFADQLIAAGHYAKGDISSRRNE  
 VLDWRRLKAQM IEKRSLGESQTLQQFSRDVDEIEAWISEKLQTASDESYKDPTNIQLSK  
 LLSKHQKHQAFEAELHANADR IRGVIDMGNSLIERGACAGSEDAVKARLAALADQWQFL  
 VQKSAEKSQKLKEANKQQNFNTGIKDFDFWLS EVEALLASEDYGKDLASVNNLLKKH  
 QLLEADISAHEDRLKDLNSQADSLMTSSAFDTSQVKDKRDTINGR FQIKSMAASRR  
 AKLNESHRLHQFFRDMDEESWIKEKLLVGSSEYGRDLTGVQNLRKKHKRLEAELAA  
 HEPAIQGVLDTGKLLSDDNTIGKEEQRLAQFVEHWKELQLAARGQRL EESLEYQQF  
 VANVEEEEEAW INEKM TLVASEDYGDTLAAIQGLLKKHEAFETDFTVHKDRVNDVCT  
 NGQDLIKKNNHHEENISSKMKGLN GKVSDLEKAAAQRKAKLDENSAFLQFNWKAD  
 VVSWIGEKENSLKTDDYGRDLSVQTLTKQETFDAGL QAFQQEGIANITALKDQLLA  
 AKHVQSKATEARHASLMKRWSQLLANSAARKKKLLEAQSHFRKVEDLFLT FAKK  
 ASAFNSWFENAEEDL TDPVRCNSLEEIKALREAHDAFRSSLSSAQADFNQLAELDR  
 QIKSFRVASN PYWFTMEALEETWRNLQKIIKERELQKQRRQEENDKLRQEF AQHANA  
 FHWIQETRTRYLLDGGSCMV EESGTLESQLEATKRKHQEI RAMRSQKKIEDLGAAMEE  
 ALILDNKYTEHSTVGLAQQWDQLDQGMRMQ HNLEQQIARNTTGVTEEALKEFSMMF  
 KHFDKDKSGRLNHQEFKSLRSLGYDLPVMEEGEPDPEFAIL DTVPNRDGHVSLQEY  
 MAFMISRETENVKSSIE SAFRAL SSEGKPYVTKEELYQNL TREQADYCVSHM  
 KPYVDGKGRELPTAFDYVEFTRSLFVN

TRTRPLEQKLI SEEDLAANDILDYKDDDDKV

**Tag:** C-Myc/DDK

**Purity:** > 80% as determined by SDS-PAGE and Coomassie blue staining

**Concentration:** >0.05 µg/µL as determined by microplate BCA method

**Labeling Method:** Labeled with [U- <sup>13</sup>C<sub>6</sub>, <sup>15</sup>N<sub>4</sub>]-L-Arginine and [U- <sup>13</sup>C<sub>6</sub>, <sup>15</sup>N<sub>2</sub>]-L-Lysine

**Buffer:** 25 mM Tris-HCl, 100 mM glycine, pH 7.3

**Storage:** Store at -80°C. Avoid repeated freeze-thaw cycles.

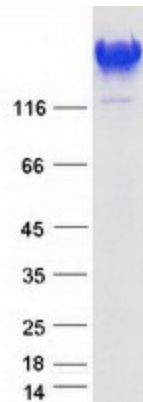
Stability:	Stable for 3 months from receipt of products under proper storage and handling conditions.
RefSeq:	<a href="#">NP_001123910</a>
RefSeq Size:	7907
RefSeq ORF:	7431
Synonyms:	DEE5; EIEE5; NEAS; SPTA2
Locus ID:	6709
UniProt ID:	<a href="#">Q13813</a>
Cytogenetics:	9q34.11

**Summary:** Spectrins are a family of filamentous cytoskeletal proteins that function as essential scaffold proteins that stabilize the plasma membrane and organize intracellular organelles. Spectrins are composed of alpha and beta dimers that associate to form tetramers linked in a head-to-head arrangement. This gene encodes an alpha spectrin that is specifically expressed in nonerythrocytic cells. The encoded protein has been implicated in other cellular functions including DNA repair and cell cycle regulation. Mutations in this gene are the cause of early infantile epileptic encephalopathy-5. Alternate splicing results in multiple transcript variants. [provided by RefSeq, Sep 2010]

**Protein Families:** Druggable Genome

**Protein Pathways:** Tight junction

### Product images:



Coomassie blue staining of purified SPTAN1 protein (Cat# [TP326485]). The protein was produced from HEK293T cells transfected with SPTAN1 cDNA clone (Cat# [RC226485]) using MegaTran 2.0 (Cat# [TT210002]).