

Product datasheet for **PH326456**

Dysferlin (DYSF) (NM_001130987) Human Mass Spec Standard

Product data:

Product Type:	Mass Spec Standards
Description:	DYSF MS Standard C13 and N15-labeled recombinant protein (NP_001124459)
Species:	Human
Expression Host:	HEK293
Expression cDNA Clone or AA Sequence:	RC226456
Predicted MW:	241.2 kDa



[View online »](#)

Protein Sequence: >RC226456 representing NM_001130987
 Red=Cloning site Green=Tags(s)

MLCCLLVASNLPSAKKDRRSDPVASL TFRGVKKRTKVIKNSVNPVWNEGFEDLKGIPLDQGSSELHVVV
 KDHETMGRNRFLEAKVPLREVLATPSLSASFNAPLLDTKKQPTGASLVLQVSYTLPVAVPLFPPPTPL
 EPSPTLPDL DVVAGGGQSR AETWSLLSDSTM DTRYSGKKWPAPTD TGGEEDTEDQGLTGDEAEPLDQSG
 GPGAPTTPRKLP SRPPPHYPG IKRKRSAPTSRKLLSDKPQDFQIRVQVIEGRQLPGVNIKPVVKVTAAGQ
 TKRTRIHKGNSPLFNETLFFNLF DSPGELFDEPIFITVVD SRSRLRTDALLGEFRMDVGTIYREPRHAYLR
 KWLLLLSDPDDFSAGARGYLKTS LCVLGPGEAPLERKDPSEDKEDIESNLLRPTGVALRGAHFCLKVFRA
 EDLPQMDDAVMDNVKQIFGFESNKNL VDPFVEVSFAGKMLCSKILEKTANPQWNQNIITLPAMFSPMCEK
 MRIRIIDWDRLTHNDIVATTYLSMSKISAPGGEIEVDDYLGF LPTFGPCYINLYGSPRETFGFPDPYTEL
 NTGKGEGVAYRGRLLL SLETKLVEHSEKVEDLPADDILRVEKYLRRRKYSLFAAFYSATMLQD VDDAIQ
 FEVSI GNYGNKFDMTCLPLASTTQYSRAVFDGCHYYL PWGNV KPVVVLSSY WEDISHRIETQNQLLGIA
 DRLEAGLEQVHLALKAQCSTEDVDSLVAQLTDEL IAGCSQPLGDIHETPSATHLDQYLQLRTHHL SQIT
 EAALALKLGHSELPAAL EQAEDWLLRLRALAEEPQNSLPDIVI WMLQGDKRVA YQRVPAHQVLF SRRGAN
 YCGKNCGLQTI FLKYPMEKVPGARMPVQIRVKLWFG LSVDEKEFNQFAEGKLSVFAET YENETKLALVG
 NWGTTGLTYPKFSDVTGKIKLPKDSFRPSAGWTWAGDWFV CPEKTL LHDM DAGHLSFVEEVFENQTRLPG
 GQWIYMSDNYTDVNGEKVLPKDDIECPLGWKWEDEEWSTDLNRAVDEQGW EYSITIPPERKPKHWVPAEK
 MYYTHRRRRWVRLRRRDL SQMEALKRHRQAEAE GEGWEYASLFGWKFHLEYRKTDAFRRRRWRRRMEPLE
 KTGPAAVFALEGALGGVMDKSEDSMSVSTL SFGVNRPTISCI FDYGNRYHLRCYMYQARDAAMDKDSF
 SDPYAIVSFLHQSQKTVVVKNTLNPTWDQTLIFYEIEIFGEPATVAEQPPSIVVELYDHD TYGADEFMGR
 CICQPSLERMPRLAWFPLTRGSQPSGELLASFELIQREKPAIHHIPGF EVQETSRI LDESED TDLPYPPP
 QREANIYMPQNIKPALQRTAIEILAWGLRNMKSYQLANI SSPSLVVECGGQTVQSCVIRNL RKNPNFDI
 CTLFMEVMLPREELYCPPITVKVIDNRQFGRRPVV GQCTIRSLESFLCDPYSAESPS PQGGPDDVSLSP
 GEDVLIDIDDK EPLIPIQLADGLSSLAPTNTASPPSSPHEE EFIDWWSKFFASIGEREKCGSYLEKDFDT
 LKVYDTQLENVEAF EGLSDFCNTFKLYRGTQEETEDPSVIGEFKGLFKIYPLPEDPAIPMPPRQFHQLA
 AQGPQECLVRIYIVRAFGLQPKDPNGKCDPYIKISIGKKSVDQDNYIPCTLEPVFGKMFELTCTLPLEK
 DLKITLDYD LLSKDEKIGETVVDLENRLSKFGARCGLPQTYCVSGPNQWRDQLRPSQLLHLFCQQHRV
 KAPVYRTDRVMFQDKEYSIEEIEAGRIPNPHLGPVEERLALHVLQQQGLVPEHVESRPLYSPLQPDIEQG
 KLQMWVDLFPKALGRPGPPFNITPRRARRFFLR CIIWNRDVI LDDL SLTGEKMSDIYVKGWMI GFEEHK
 QKTDVHYRSLGGEGNFNWRFI FPFDYLP AEQVCTIAKKDAFWRLDKTESKIPARVVFQIWDNDKFSFDDF
 LGSLQLDLNRMPKPAKTAKKCSLDQLDDAFHPEWVSLFEQKTVKGW WPCVAEEGK KILAGKLEMTLEI
 VAESEHEERPAGQGRDEPNMNPKLEDPRRPDTSFLWFTSPYKTMKFI LWRRFRWAILFIILFILLFLA
 IFIYAFPNYAAMKLVKPF S

TRTRPLEQKLISEEDLAANDILDYKDDDDKV

Tag: C-Myc/DDK

Purity: > 80% as determined by SDS-PAGE and Coomassie blue staining

Concentration: >0.05 µg/µL as determined by microplate BCA method

Labeling Method: Labeled with [U- ¹³C₆, ¹⁵N₄]-L-Arginine and [U- ¹³C₆, ¹⁵N₂]-L-Lysine

Buffer: 25 mM Tris-HCl, 100 mM glycine, pH 7.3

Storage: Store at -80°C. Avoid repeated freeze-thaw cycles.

Stability: Stable for 3 months from receipt of products under proper storage and handling conditions.

RefSeq: [NP_001124459](#)

RefSeq ORF: 6357

Synonyms: FER1L1; LGMD2B; LGMDR2; MMD1

Locus ID: 8291

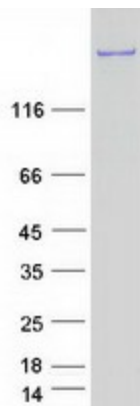
UniProt ID: [O75923](#)

Cytogenetics: 2p13.2

Summary: The protein encoded by this gene belongs to the ferlin family and is a skeletal muscle protein found associated with the sarcolemma. It is involved in muscle contraction and contains C2 domains that play a role in calcium-mediated membrane fusion events, suggesting that it may be involved in membrane regeneration and repair. In addition, the protein encoded by this gene binds caveolin-3, a skeletal muscle membrane protein which is important in the formation of caveolae. Specific mutations in this gene have been shown to cause autosomal recessive limb girdle muscular dystrophy type 2B (LGMD2B) as well as Miyoshi myopathy. Alternative splicing results in multiple transcript variants. [provided by RefSeq, Aug 2008]

Protein Families: Transmembrane

Product images:



Coomassie blue staining of purified DYSF protein (Cat# [TP326456]). The protein was produced from HEK293T cells transfected with DYSF cDNA clone (Cat# [RC226456]) using MegaTran 2.0 (Cat# [TT210002]).