

Product datasheet for PH326391

PRAGMIN (PRAG1) (NM_001080826) Human Mass Spec Standard

Product data:

Product Type:	Mass Spec Standards
Description:	SGK223 MS Standard C13 and N15-labeled recombinant protein (NP_001074295)
Species:	Human
Expression Host:	HEK293
Expression cDNA Clone or AA Sequence:	RC226391
Predicted MW:	149.1 kDa
Protein Sequence:	>RC226391 representing NM_001080826 Red=Cloning site Green=Tags(s)

MHQTLCCLNPESLKMSACSDFVEHIWKPGCKNCFLRSDHQLVAGPPQPRAGSLPPPPRLPPRPENCRLE
DEGVNSSPYSKPTIAVKPTMMSSEASDVWTEANLSAEVSQVIWRRAPGKLLPKQEDAPVVYLGSRGVQ
KPAGPSTSPDGNRCPAYTMVGLHNLEPRGERNIAFHPVSFPEEKAVHKEKPSFPYQDRPSTQESFRQK
LAAGAGTSGCHQGGPLRESLPSSEDDSDQRCSPSGDSEGGEYCSILDCCPGSPVAKAASQTAGSRGRHG
GRDCSPTCWEQKCSGPAEQEKRGSPFKECCSQGPTAHPSCSLGPKKLSLTSEAAISSDGLSCGSGSGSG
ASSPFVPHLESDYCSLMKEPAPEKQDDPGCGVTPSRCLGLTGEPQPPAHPREATQPEPIYAESTKRKKA
APVPSKSAKIEHAAAAQGQGVCTGNAWAQAASGWGRDSDPTPQVSATITVMAAHPEDHRTIYLLSS
PDSAVGVQWPRGPVSNSEVGEETSSAGQGLSSRESHAHSASESKPKERPAIPPKLSKSSPVGSPVSPSA
GGPPVSPDLADLSDGSSGSSIGPQPPSQGPADPAPSCRTPNGVAISDPSPRCQPAASSASEQRRPRFQAGT
WSRQCRIEEEEEVEQELLSHSWGRETNGPTDHSNSTTWHRLHPTDGSSGQNSKVTGMSKASAFEFPP
KDRSGIETFSPPPPPKSRHLLKMNKSSSDLEKVSQGSAESLSPSFRGVHVSFTTGSTDSLSDSRTCS
GGPSELALHSPNTSGKFLFAPVFPFSGSTEDVSPSGPQQPPPLPQKKIVSRAASSPDGFFWTQGS
ASPKNLNSHSETNVHDESHFSYSLSPGNRHHVPVSSSDPLEKAFKGGSHWLPAAAGLAGNRGGCGSPGLQC
KGAPSASSQLSVSSQASTGSTQLQLHGLLSNISSEKGYAKLGGLYTQSLARLVAKCEDLFMGGQKKE
HFNENNWSLFLKTCNKPCDSDGAIYYCATCSEDPGSTYAVKICKAPEKTVSYCSPVSVPHFNIQQDCG
HFVAVSPSSMLSSPDAPKDPVPALPTHPPAQEQDCVVVITREVPHTASDFVRDASAASHQAEPEAYERRV
CFLLQLCNGLEHLKEHGIHRDLLENLLL VHCTLQAGPGPAPAPAPAAAAAPPSSAAPPAGGTLSP
AAGPASPEGPREQLPRLIISNFLKAKQKPGGTPNLQKKSQARLAPEIVSASQYRKFDEFQGTGILYEL
LHQPMPFEVRAQLRERDYRQEDLPPLPALSLYSPGLQQLAHLLEADPIKRIRIGEAKRVLQCLLWGPRR
ELVQQPGTSEEALCGTLHNWIDMKRALMMKFAEKAVDRRRGVELEDWLCQYLASAEPGALLQSLKLLQ
LL

TRTRPLEQKLISEEDLAANDILDYKDDDDKV

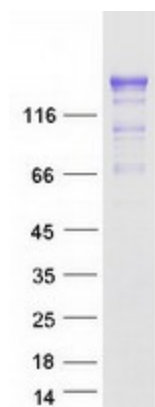
Tag:	C-Myc/DDK
Purity:	> 80% as determined by SDS-PAGE and Coomassie blue staining



[View online »](#)

Concentration:	>0.05 µg/µL as determined by microplate BCA method
Labeling Method:	Labeled with [U- ¹³ C ₆ , ¹⁵ N ₄]-L-Arginine and [U- ¹³ C ₆ , ¹⁵ N ₂]-L-Lysine
Buffer:	25 mM Tris-HCl, 100 mM glycine, pH 7.3
Storage:	Store at -80°C. Avoid repeated freeze-thaw cycles.
Stability:	Stable for 3 months from receipt of products under proper storage and handling conditions.
RefSeq:	NP_001074295
RefSeq ORF:	4206
Synonyms:	NACK; PEA2; PRAGMIN; SGK223
Locus ID:	157285
UniProt ID:	Q86YV5
Cytogenetics:	8p23.1
Summary:	This gene encodes an enzyme that belongs to the tyrosine protein kinase family. A similar protein in rat binds to Rho family GTPase 2 (Rnd2) and regulates neurite outgrowth via activation of Ras homolog gene family, member A (RhoA). [provided by RefSeq, Mar 2014]
Protein Families:	Protein Kinase

Product images:



Coomassie blue staining of purified PRAG1 protein (Cat# [TP326391]). The protein was produced from HEK293T cells transfected with PRAG1 cDNA clone (Cat# [RC226391]) using MegaTran 2.0 (Cat# [TT210002]).