

Product datasheet for PH326379

LTBP3 (NM_001130144) Human Mass Spec Standard

Product data:

Product Type:	Mass Spec Standards
Description:	LTBP3 MS Standard C13 and N15-labeled recombinant protein (NP_001123616)
Species:	Human
Expression Host:	HEK293
Expression cDNA Clone or AA Sequence:	RC226379
Predicted MW:	139.36 kDa
Protein Sequence:	>RC226379 representing NM_001130144 Red=Cloning site Green=Tags(s)

MPGPRGAAGGLAPEMRGAGAAGLLALLLLLLLLGLGGRVEGGPAGERGAGGGGALARERFKVVFAPVI
CKRTCLKGQCRDSCQQGSNMTLIGENGHSTDTLTGSGFRVVCPLPCMNGGQCSSRNQCLCPPDFTGRFC
QVPAGGAGGGTGGSGPGLSRTGALSTGALPPLAPEGDSVASKHAIYAVQVIADPPGPGEGPPAQHAAFLV
PLGPGQISAEVQAPPPVNVVRVHHPPEASVQVHRIESSNAESAAPSQHLLPHPKPSHPRPPTQKPLGRFC
QDTLPKQPCGSNPLPGLTKQEDCCGSIGTAWGQSKCHKCPQLQYTGVPKPGPVRGEVADCPQGYKRLNS
THCQDINECAMPVCRHGDCLNPNPGSYRCVPPGHSLGPSRTQCIADKPEEKSLCFRLVSPEHQQHPLT
TRLTRQLCCCSVGKAWGARCQRCPDGTAAFKIICPAGKGYHILTSHTLTIQGESDFSLFLHPDGPPK
QQLPESPSQAPPPEDTEEERGVTDSVSEERSVQQSHPTATTTPARPYPELISRPSPTMRWFLPDLP
SRSAVEIAPTQVTETDECRLNQNICGHGECVPGPPDYSCHNPGYRSHQHRVCVDVNECEAEPCGPRG
ICMNTGGSYNCHCNRGYRLHVGAGGRSCVDLNECAKPHLCGDGGFCINFPGHYKNCNCPGYRLKASRPPV
CEDIDECDPSSCPDGKCNKPGSFKCIACQPGYRSQGGGACRDVNECAEGSPCSPGWENLPGSFRCTC
AQGYAPADGRSCLDVDECEAGDVCDNGICSNTPGSFQCQLSGYHLSRDRSHCEDIDECDFPAACIGGD
CINTNGSYRCLCPQGHRLVGGKRCQDIDECSDPSLCLPHGACKNLQGSYVCVDEGFTPTQDQHGCCVEV
EQPHHKKECYLNFDDTVFCDSVLATNVTQQECCSLGAGWGDHCEIYPCPVYSSAEFHSLCPDGKGYTQD
NNIVNYGIPAHRDIDECMLFGSEICKKEGCVNTQPGYECYCKQGFYYDGNLLECDVDVDECLDESNCRNGV
CENTRGGYRCACTPPAEYSPAQRQCLSPEEMDVDECQDPAACRPGRCVNLPGSYRCECRPPWVPGPSGRD
CQLPESPAERAPERDVCWSQRGEDGMCAGPLAGPALTFDDCCCRQGRGWAQCRPCPPRGAGSHCPTSQ
SESNSFWDTSPLLL GKPPRDEDSSEEDSDECRCSVGRCVPRPGGAVCECPGGFQLDASRARCVDIIDECRE
LNQRGLLCKSERCVNTSGSFRVCCKAGFARSRPHGACVQRRR

TRTRPLEQKLISEEDLAANDILDYKDDDDKV

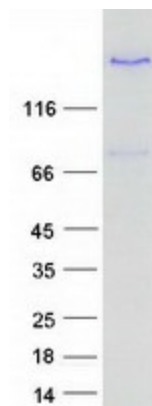
Tag:	C-Myc/DDK
Purity:	> 80% as determined by SDS-PAGE and Coomassie blue staining
Concentration:	>0.05 µg/µL as determined by microplate BCA method



[View online »](#)

Labeling Method:	Labeled with [U- ¹³ C ₆ , ¹⁵ N ₄]-L-Arginine and [U- ¹³ C ₆ , ¹⁵ N ₂]-L-Lysine
Buffer:	25 mM Tris-HCl, 100 mM glycine, pH 7.3
Storage:	Store at -80°C. Avoid repeated freeze-thaw cycles.
Stability:	Stable for 3 months from receipt of products under proper storage and handling conditions.
RefSeq:	NP_001123616
RefSeq ORF:	3909
Synonyms:	DASS; GPHYSD3; LTBP-3; LTBP2; pp6425; STHAG6
Locus ID:	4054
UniProt ID:	Q9NS15 , Q8WYU6
Cytogenetics:	11q13.1
Summary:	The protein encoded by this gene forms a complex with transforming growth factor beta (TGF-beta) proteins and may be involved in their subcellular localization. Activation of this complex requires removal of the encoded binding protein. This protein also may play a structural role in the extracellular matrix. Three transcript variants encoding different isoforms have been found for this gene.[provided by RefSeq, Jan 2010]
Protein Families:	Transmembrane

Product images:



Coomassie blue staining of purified LTBP3 protein (Cat# [TP326379]). The protein was produced from HEK293T cells transfected with LTBP3 cDNA clone (Cat# [RC226379]) using MegaTran 2.0 (Cat# [TT210002]).