

Product datasheet for PH326293

Eph receptor A7 (EPHA7) (NM_004440) Human Mass Spec Standard

Product data:

Product Type:	Mass Spec Standards
Description:	EPHA7 MS Standard C13 and N15-labeled recombinant protein (NP_004431)
Species:	Human
Expression Host:	HEK293
Expression cDNA Clone or AA Sequence:	RC226293
Predicted MW:	111.9 kDa
Protein Sequence:	>RC226293 representing NM_004440 Red=Cloning site Green=Tags(s)

MVFQTRYPSWIIILCYIWLLRFAHTGEAQAQKEVLLLDLSKAQQTELEWISSPPNGWEEISGLDENYTPIRT
YQVCQVMEPNQNNWLRRTNWISKGNAQRIFVELKFTLRDCNSLPGVLGTCKETFNLYYYETDYDTRNIRE
NLVYVKIDTIAADESFTQGDGERMKLNTREVREIGPLSKKGFYLAQFDVGACIALVSVKVVYKCCWSIIE
NLAIFPDVTGSEFSSLVEVRGTCVSSAEEEAENAPRMHCSAEGEWLVPIGKCICKAGYQQGDTCEPCG
RGFYKSSSQDLQCSRCPTHSFSDKEGSSRCECEDGYRAPSDPPYVACTRPPSAPQNLIFNINQTTVSLE
WSPPADNGGRNDVTYRILCKRCSWEQGEVPCGSNIGYMPQQTGLEDNVYTVMDLLAHANYTFEVEAVNG
VSDLRSQRLFAAVSITGQAAPSQVSGVMKERVLRQSVELSWQEPHPNGVITEYEIKYKEDQRERTY
STVKTSTASINNLKPGTVYVQIRAF TAAGYGNYSRPLDVATLEEATGKMFEATAVSSEQNPVIIIAV
VAVAGTIIILVFMVFGFIIIGRRHCGYSKADQEGDEELYFHFKFPGTKTYIDPETYEDPNRAVHQFAKELDA
SCIKIERVIGAGEFGEVCSGRLKLPGKRDVAVAIKTLKVGYTEKQRRDFLCEASIMGQFDHPNVVHLEGV
VTRGKPMIVIEFMENGALDAFLRKHDGQFTVIQLVGMLRGAAGMRYLADMGYVHRDLAARNILVNSNL
VCKVSDFGLSRVIEDDPEAVYTTTGGKIPVRWTAPEAIQYRKFTSASDVWSYGIVMWEVMSYGERPYWDM
SNQDVIIKAIIEEGYRLPAPMDCPAGLHQLMLDCWQKERAERPKEQIVGILDKMIRNPNSLKTPLGTCSR
ISPLLDQNTPDFTTFCVSGEWLQAICKMERYKDNFTAAGYNSLESVARMITIEDVMSLGITLVGHQKIMSS
IQTMRAQMLHLHGTGIQV

TRTRPLEQKLI SEEDLAANDILDYKDDDDKV

Tag:	C-Myc/DDK
Purity:	> 80% as determined by SDS-PAGE and Coomassie blue staining
Concentration:	>0.05 µg/µL as determined by microplate BCA method
Labeling Method:	Labeled with [U- ¹³ C ₆ , ¹⁵ N ₄]-L-Arginine and [U- ¹³ C ₆ , ¹⁵ N ₂]-L-Lysine
Buffer:	25 mM Tris-HCl, 100 mM glycine, pH 7.3
Storage:	Store at -80°C. Avoid repeated freeze-thaw cycles.



[View online »](#)

Stability: Stable for 3 months from receipt of products under proper storage and handling conditions.

RefSeq: [NP_004431](#)

RefSeq ORF: 2994

Synonyms: EHK-3; EHK3; EK11; HEK11

Locus ID: 2045

UniProt ID: [Q15375](#)

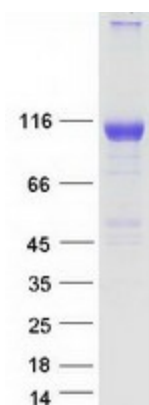
Cytogenetics: 6q16.1

Summary: This gene belongs to the ephrin receptor subfamily of the protein-tyrosine kinase family. EPH and EPH-related receptors have been implicated in mediating developmental events, particularly in the nervous system. Receptors in the EPH subfamily typically have a single kinase domain and an extracellular region containing a Cys-rich domain and 2 fibronectin type III repeats. The ephrin receptors are divided into 2 groups based on the similarity of their extracellular domain sequences and their affinities for binding ephrin-A and ephrin-B ligands. Increased expression of this gene is associated with multiple forms of carcinoma. Alternative splicing results in multiple transcript variants. [provided by RefSeq, Dec 2013]

Protein Families: Druggable Genome, Protein Kinase, Transmembrane

Protein Pathways: Axon guidance

Product images:



Coomassie blue staining of purified EPA7 protein (Cat# [TP326293]). The protein was produced from HEK293T cells transfected with EPA7 cDNA clone (Cat# [RC226293]) using MegaTran 2.0 (Cat# [TT210002]).