

Product datasheet for PH326285

SYNPO2L (NM_001114133) Human Mass Spec Standard

Product data:

Product Type:	Mass Spec Standards
Description:	SYNPO2L MS Standard C13 and N15-labeled recombinant protein (NP_001107605)
Species:	Human
Expression Host:	HEK293
Expression cDNA Clone or AA Sequence:	RC226285
Predicted MW:	102.3 kDa
Protein Sequence:	>RC226285 representing NM_001114133 Red=Cloning site Green=Tags(s)

MGAEEEVLVTLSSGAPWGFRLHGGAEQRKPLQVSKIRRRSQAGRAGLRERDQLLAINGVSCNTLSHASAM
SLIDASGNQLVLTVQRLADEGPVQSPSPHELQVLSPLSPLSPEPPGAPVQPQLQPGSLRSPDSEAYIGE
TDSADGDPATQEKPRRPRRRGPTPTPPGAPPDEVYLSDSAEPAPTIPGPPSQGDSRVSSPSWEDGAAL
QPPPAEALLLPHGPLRPGPHLIPMVGVPVHPVAEDLTTTYTQKAKQAKLQRAESLQEKSIKEAKTKCRTI
ASLLTAAPNPHSKGVL MFKRRQRAKKYTLVSFGAAAGTGAEEDGVPPTSESELDEEAFSDARSLTNQS
DWDSPYLDMELARAGSRASEGQGSGLGGQLSEVSGRGVQLFEQQQRADSSTQELARVEPAAMLNGEGLQ
SPPRAQSAPPEAAVLPSPPLPAPVASPRPFQPGGAPTAPPSIFNRSARPFPTGLQGRPTTTSVIFRPL
APKRANDSLGGLSPAPPFLSSQGPTPLPSFTSGVPSHAPVSGSPSTPRSSGPVTATSSLYIPAPSRPVT
PGGAPEPPAPPSAAAMTSTASIFLSAPLRPSARPEAPAPGGAPEPPSAREQRISVPAARTGILQEARRR
GTRKQMFPRGKEETKNSPPELLSLVQNLDEKPRAGGAESGPEEDALSLGAEACNFMQPVGARSYKTLPH
VTPKTPPPMAPKTPPPMTPKTPPPVAPKPPSRGLLDGLVNGAASSAGIPEPPRLQGRGGELFAKRQSRAD
RYVVEGTPGPGGLGPRRSPSPPTPSLPPSWKYSPNIRAPPIAYNPLLSPFFPQAARTLPAQSQGPRATP
KQGIKALDFMRHQPYQLKTAMFCFDEVPPTGPIASGSPKTARVQEIRRFSTPAPQPTAEPLAPTVLAPR
AATTLDEPIWRTELASAPVPSAPPPEAPRGLGASPSGCFQVARPRFSATRTGLQAHVWRPAGHQ

TRTRPLEQKLI SEEDLAANDILDYKDDDDKV

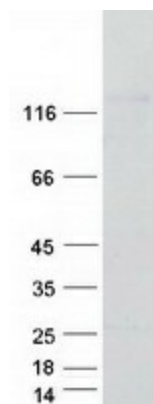
Tag:	C-Myc/DDK
Purity:	> 80% as determined by SDS-PAGE and Coomassie blue staining
Concentration:	>0.05 µg/µL as determined by microplate BCA method
Labeling Method:	Labeled with [U- ¹³ C ₆ , ¹⁵ N ₄]-L-Arginine and [U- ¹³ C ₆ , ¹⁵ N ₂]-L-Lysine
Buffer:	25 mM Tris-HCl, 100 mM glycine, pH 7.3
Storage:	Store at -80°C. Avoid repeated freeze-thaw cycles.
Stability:	Stable for 3 months from receipt of products under proper storage and handling conditions.



[View online »](#)

RefSeq:	NP_001107605
RefSeq ORF:	2931
Locus ID:	79933
UniProt ID:	Q9H987
Cytogenetics:	10q22.2
Summary:	Actin-associated protein that may play a role in modulating actin-based shape. [UniProtKB/Swiss-Prot Function]

Product images:



Coomassie blue staining of purified SYNPO2L protein (Cat# [TP326285]). The protein was produced from HEK293T cells transfected with SYNPO2L cDNA clone (Cat# [RC226285]) using MegaTran 2.0 (Cat# [TT210002]).