

## Product datasheet for PH326207

### SEZ6L2 (NM\_001114099) Human Mass Spec Standard

#### Product data:

Product Type:	Mass Spec Standards
Description:	SEZ6L2 MS Standard C13 and N15-labeled recombinant protein (NP_001107571)
Species:	Human
Expression Host:	HEK293
Expression cDNA Clone or AA Sequence:	RC226207
Predicted MW:	90.7 kDa
Protein Sequence:	>RC226207 representing NM_001114099 Red=Cloning site Green=Tags(s)

MGTPRAQHPPPPQLLFLILLSCPWIQGLPLKEEELPEPGSETPTVASEALAEELLHGALLRRGPEMGYLP  
GPPLGPEGGEEETTTTITTTTITTTTSPVLCNNISEGEGYVESPDLGSPVSRTLGLLDCTYSIHVYP  
GYGIEIQVQTLNLSQEEELLVLAGGGSPGLAPRLLANSSMLGEGQVLRSPNRRLLHFQSPRVPRGGGFR  
IHYQAYLLSCGFPPRPAHGDVSVTDLHPGGTATFHCDSGYQLQGEETL ICLNGTRPSWNGETPSCMASC  
GTIHNATLGRIVSPEPGGAVGNLTCRWVIEAAEGRRLHLHFERVSLDEDNDRLMVRSGGSPSPVIYDS  
DMDDVPERGLISDAQSLYVELLSETPANPLLLSLRFEAFEDRCFAPFLAHGNVTTDPEYRPGALATFS  
CLPGYALEPPGPPNAIECVDPTEPHWNDTEPACKAMCGGELSEPAGVVLSPDWQSYSPGQDCVWGVHVQ  
EEKRILLQVEILNVREGDMLTDFDGDGPSARVLAQLRGPQPRRRLLSSGPDILTQFQAPPGPPNPLGLGQG  
FVLHFKEVPRNDTCELPPEWGWRTASHGDLIRGTVLTYQCEPGYELLGSDILTCQWDLWSAAPPACQ  
KIMTCADPGEIANGHRTASDAGFPVGVSHVQYRCLPGYSLEGAAMLTCYSRDTGTPKWSDRVPKCALKEYE  
CLNPGVPENGYQTLYKHHYQAGESLRFYCYEGFELIGEVTITCVPGHPSQWTSQPPLCKVTQTTDPSRQL  
EGGNLALAILLPLGLVIVLGSVYIYYTKLQGKSLFGFSGSHSYSPITVESDFSNPLYEAGDTREYEVSI

TRTRPLEQKLISEEDLAANDILDYKDDDDKV

Tag:	C-Myc/DDK
Purity:	> 80% as determined by SDS-PAGE and Coomassie blue staining
Concentration:	>0.05 µg/µL as determined by microplate BCA method
Labeling Method:	Labeled with [U- <sup>13</sup> C <sub>6</sub> , <sup>15</sup> N <sub>4</sub> ]-L-Arginine and [U- <sup>13</sup> C <sub>6</sub> , <sup>15</sup> N <sub>2</sub> ]-L-Lysine
Buffer:	25 mM Tris-HCl, 100 mM glycine, pH 7.3
Storage:	Store at -80°C. Avoid repeated freeze-thaw cycles.
Stability:	Stable for 3 months from receipt of products under proper storage and handling conditions.
RefSeq:	<a href="#">NP_001107571</a>



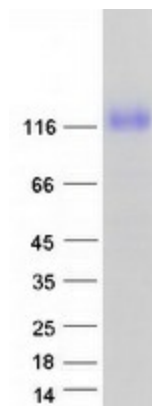
[View online >](#)

RefSeq ORF:	2520
Synonyms:	BSRPA; PSK-1
Locus ID:	26470
UniProt ID:	<a href="#">Q6UXD5</a> , <a href="#">Q6UXD5-2</a>
Cytogenetics:	16p11.2

**Summary:** This gene encodes a seizure-related protein that is localized on the cell surface. The gene is located in a region of chromosome 16p11.2 that is thought to contain candidate genes for autism spectrum disorders (ASD), though there is no evidence directly implicating this gene in ASD. Increased expression of this gene has been found in lung cancers, and the protein is therefore considered to be a novel prognostic marker for lung cancer. Alternative splicing of this gene results in multiple transcript variants. [provided by RefSeq, Aug 2011]

**Protein Families:** Druggable Genome, Transmembrane

### Product images:



Coomassie blue staining of purified SEZ6L2 protein (Cat# [TP326207]). The protein was produced from HEK293T cells transfected with SEZ6L2 cDNA clone (Cat# [RC226207]) using MegaTran 2.0 (Cat# [TT210002]).