

## Product datasheet for PH326180

### LRRC8A (NM\_001127244) Human Mass Spec Standard

#### Product data:

Product Type:	Mass Spec Standards
Description:	LRRC8A MS Standard C13 and N15-labeled recombinant protein (NP_001120716)
Species:	Human
Expression Host:	HEK293
Expression cDNA Clone or AA Sequence:	RC226180
Predicted MW:	94.2 kDa
Protein Sequence:	>RC226180 protein sequence Red=Cloning site Green=Tags(s)

MIPVTELRVYFADTQPAYRILKPVWVDFTDYISIVMLMIAVFGGTLQVTQDKMICLPCKWVTKDSCNDSFR  
GWAAPGPEPTYPNSTILPTDGTGPTGIKYDLDRHQYNYVDAVCYENRLHWFAYFPYLVLLHTLIFLACS  
NFWFKFPRTSSKLEHFVSILLKCFDSPWTRALSETVVEESDPKPAFSKMNGSMDKKSSTVSEDVEATVP  
MLQRTKSRIEQGIVDRSETGVLDKKEGEQAKALFEKVKKFRTHVEEGDIVYRLYMRQTIKVIKILIIIC  
YTVVYVHNKIFDVDTVDIESLTYRTRCAHPLATLFKILASFYISLVIFYGLICMYTLWMLRRLSKK  
YSFESIREESSYSDIPDVKNDFAFMLHLIDQYDPLYSKRFVFLSEVSENKLRQLNLNNEWTLDKLRQL  
TKNAQDKLELHLFMLSGIPDVFVLEVLKLELIPDVTIPPSIAQLTGLKELWLYHTAAKIEAPALAF  
LRENLRALHIKFTDIKEIPLWIYSLKTLLELHLTGNSAENNRIVIDGLRELKRLKVLRLKSNLSKLPQ  
VVTDVGVHLQKLSINNEGTKLIVLSLKKMANLTELELIRCDLERIPHSIFSLHNLQEIDLKDNLKTIE  
EII SFQHLHRLTCLKLWYNHAIYPIQIGNLTNLERLYLNRNKIEKIPTQLFYCRKRLRYLDL SHNNLTF  
PADIGLLQNLQNLAITANRIETLPPELFQCRKLRALHLGNNVLQSLPSRVGELTNLTQIELRGNRLECLP  
VELGECPLLRSGLVVEEDLFNTLPPEVKERLWRADKEQA

TRTRPLEQKLI SEEDLAANDILDYKDDDDKV

Tag:	C-Myc/DDK
Purity:	> 80% as determined by SDS-PAGE and Coomassie blue staining
Concentration:	>0.05 µg/µL as determined by microplate BCA method
Labeling Method:	Labeled with [U- <sup>13</sup> C <sub>6</sub> , <sup>15</sup> N <sub>4</sub> ]-L-Arginine and [U- <sup>13</sup> C <sub>6</sub> , <sup>15</sup> N <sub>2</sub> ]-L-Lysine
Buffer:	25 mM Tris-HCl, 100 mM glycine, pH 7.3
Storage:	Store at -80°C. Avoid repeated freeze-thaw cycles.
Stability:	Stable for 3 months from receipt of products under proper storage and handling conditions.
RefSeq:	<a href="#">NP_001120716</a>



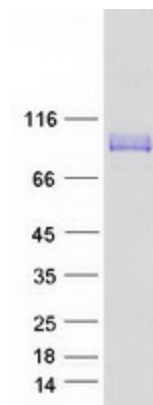
[View online »](#)

RefSeq Size:	4637
RefSeq ORF:	2430
Synonyms:	AGM5; HsLRRC8A; LRRC8; SWELL1
Locus ID:	56262
UniProt ID:	<a href="#">Q8IWT6</a> , <a href="#">A0A024R892</a> , <a href="#">A8K1C7</a>
Cytogenetics:	9q34.11

**Summary:** This gene encodes a protein belonging to the leucine-rich repeat family of proteins, which are involved in diverse biological processes, including cell adhesion, cellular trafficking, and hormone-receptor interactions. This family member is a putative four-pass transmembrane protein that plays a role in B cell development. Defects in this gene cause autosomal dominant non-Bruton type agammaglobulinemia, an immunodeficiency disease resulting from defects in B cell maturation. Multiple alternatively spliced transcript variants, which encode the same protein, have been identified for this gene. [provided by RefSeq, Jul 2008]

**Protein Families:** Transmembrane

### Product images:



Coomassie blue staining of purified LRRC8A protein (Cat# [TP326180]). The protein was produced from HEK293T cells transfected with LRRC8A cDNA clone (Cat# [RC226180]) using MegaTran 2.0 (Cat# [TT210002]).