

Product datasheet for PH326157

CD18 (ITGB2) (NM_001127491) Human Mass Spec Standard

Product data:

Product Type:	Mass Spec Standards
Description:	ITGB2 MS Standard C13 and N15-labeled recombinant protein (NP_001120963)
Species:	Human
Expression Host:	HEK293
Expression cDNA Clone or AA Sequence:	RC226157
Predicted MW:	84.78 kDa
Protein Sequence:	>RC226157 representing NM_001127491 Red=Cloning site Green=Tags(s)

MLGLRPPLLALVGLL SLGCVLSQECTKFKVSSCRECIESGPGCTWCQKLNFTGPGDPDSIRCSTRPQLLM
RGCADDIMDPTSLAETQEDHNGGQKQLSPQKVTL YLRPGQAAAFNVTFRRAKGYPIDL YYLMDLSYSML
DDL RNVKKLGGDLLRALNEITESGRIGFGSFVDKTVLPFVNTHPDKLRNPCPNKEKECQPPFAFRHVLK
TNNNQFQTEVGKQLISGNLDAPEGGLDAMMQVAACPEEIGWRNVTRLLVFATDDGFHFAGDGKLGAILT
PNDGRCHLEDNL YKRSNEFDYPSVGQLAHKLAENNIQPIFAVTSRMVKTYEKL TEIIPKSAVGELSEDSS
NVVQLIKNAYNKLSSRVFLDHNALPDTLKVTYDSFC SNGVTHRNQPRGDCDGVQINVPITFQVKVATEC
IQEQSFVIRALGFTD IVTVQVLPQCECRCDQSRDRSLCHGKGFLECGICRCDTGYIGKNCECQTQGRSS
QELEGSCRDNNSIICSLGDCVCGQCLCHTSDVPGKLIYGQYCECDTINCERYNGQVCGGPGRGLCFCG
KCRCHPGFEGSACQCERTTEGCLNPRRVECSGRGRRCNVCECHSGYQLPLCQCECPGCPSPCGKYISCAE
CLKFEKGPFGKNCSAACPLQLSNPVKGRGTCKERDSEGCWVAYTLEQQDGMDRYLIYVDESRECVAGPN
IAAIVGGTVAGIVLIGILLVIWKAL IHLSDLREYRFEKEKLSQWNNNDNPLFKSATTTVMNPKFAES

TRTRPLEQKLISEEDLAANDILDYKDDDDKV

Tag:	C-Myc/DDK
Purity:	> 80% as determined by SDS-PAGE and Coomassie blue staining
Concentration:	>0.05 µg/µL as determined by microplate BCA method
Labeling Method:	Labeled with [U- 13C6, 15N4]-L-Arginine and [U- 13C6, 15N2]-L-Lysine
Buffer:	25 mM Tris-HCl, 100 mM glycine, pH 7.3
Storage:	Store at -80°C. Avoid repeated freeze-thaw cycles.
Stability:	Stable for 3 months from receipt of products under proper storage and handling conditions.
RefSeq:	NP_001120963



[View online »](#)

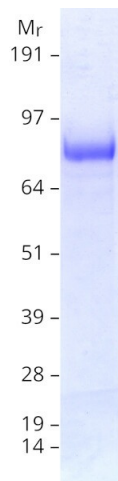
RefSeq ORF: 2307
Synonyms: CD18; LAD; LCAMB; LFA-1; MAC-1; MF17; MFI7
Locus ID: 3689
UniProt ID: [P05107](#), [A0A494C0X7](#)
Cytogenetics: 21q22.3

Summary: This gene encodes an integrin beta chain, which combines with multiple different alpha chains to form different integrin heterodimers. Integrins are integral cell-surface proteins that participate in cell adhesion as well as cell-surface mediated signalling. The encoded protein plays an important role in immune response and defects in this gene cause leukocyte adhesion deficiency. Alternative splicing results in multiple transcript variants. [provided by RefSeq, Dec 2014]

Protein Families: Druggable Genome, Transmembrane

Protein Pathways: Cell adhesion molecules (CAMs), Leukocyte transendothelial migration, Natural killer cell mediated cytotoxicity, Regulation of actin cytoskeleton, Viral myocarditis

Product images:



Coomassie blue staining of purified ITGB2 protein (Cat# [TP326157]). The protein was produced from HEK293T cells transfected with ITGB2 cDNA clone (Cat# [RC226157]) using MegaTran 2.0 (Cat# [TT210002]).